

RMMRU

ANNUAL REPORT 2019

A centre for evidence based research and grassroots action



Sattar Bhaban (4th Floor)
179, Shahid Syed Nazrul Islam Sarani
Bijoy Nagar, Dhaka-1000
website: www.rmmru.org
Facebook: www.facebook.com/rmmru

Abbreviation

A2i: Access to Information

ADD: Abu Dhabi Dialogue

ADFM: Asia Dialogue on Forced Migration

BMET: Bureau of Manpower, Employment and Training

BAIRA: Bangladesh Association of International Recruiting Agency

BCSM: Bangladesh Civil Society for Migration

CSAS: Centre for South Asian Studies

CSO: Civil Society Organisation

CP: Colombo Process

CIM: Climate Induced Migration

DFID: Department for International Development

FLM: Fairer Labour Migration

GMC: Grievance Management Committee

GFMD: Global Forum on Migration and Development

ILO: International Labour Organisation

MISTY: Migration, Sustainability and Transformation

MFA: Migrant Forum in Asia

MJF: Manusher Jonno Foundation

MRPC: Migrant Rights Protection Committee

NSMDCIID: National Strategy on the Management of Disaster and Climate Induced Internal Displacement

NTS: Population Movements: Non-Traditional Issue in South Asian Security Discourse

RMMRU: Refugee and Migratory Movements Research Unit

SEEM: Social and Economic Exclusion and Migration

SCM: Social Cost of Migration on Families Left-behind

SDC: Swiss Agency for Development and Cooperation

SAARC: South Asian Association for Regional Cooperation

UNPDD: United Nations Platform on Disaster Displacement

UNDRR: United Nations Office for Disaster Risk Reduction

VEBM: Building Resilience to Violent Extremism among Bangladeshi Migrant Workers

WEWB: Wage Earners' Welfare Board

WEWD: Wage Earners' Welfare Desk

RMMRU Annual Report 2019

A centre for evidence based research and grassroots action

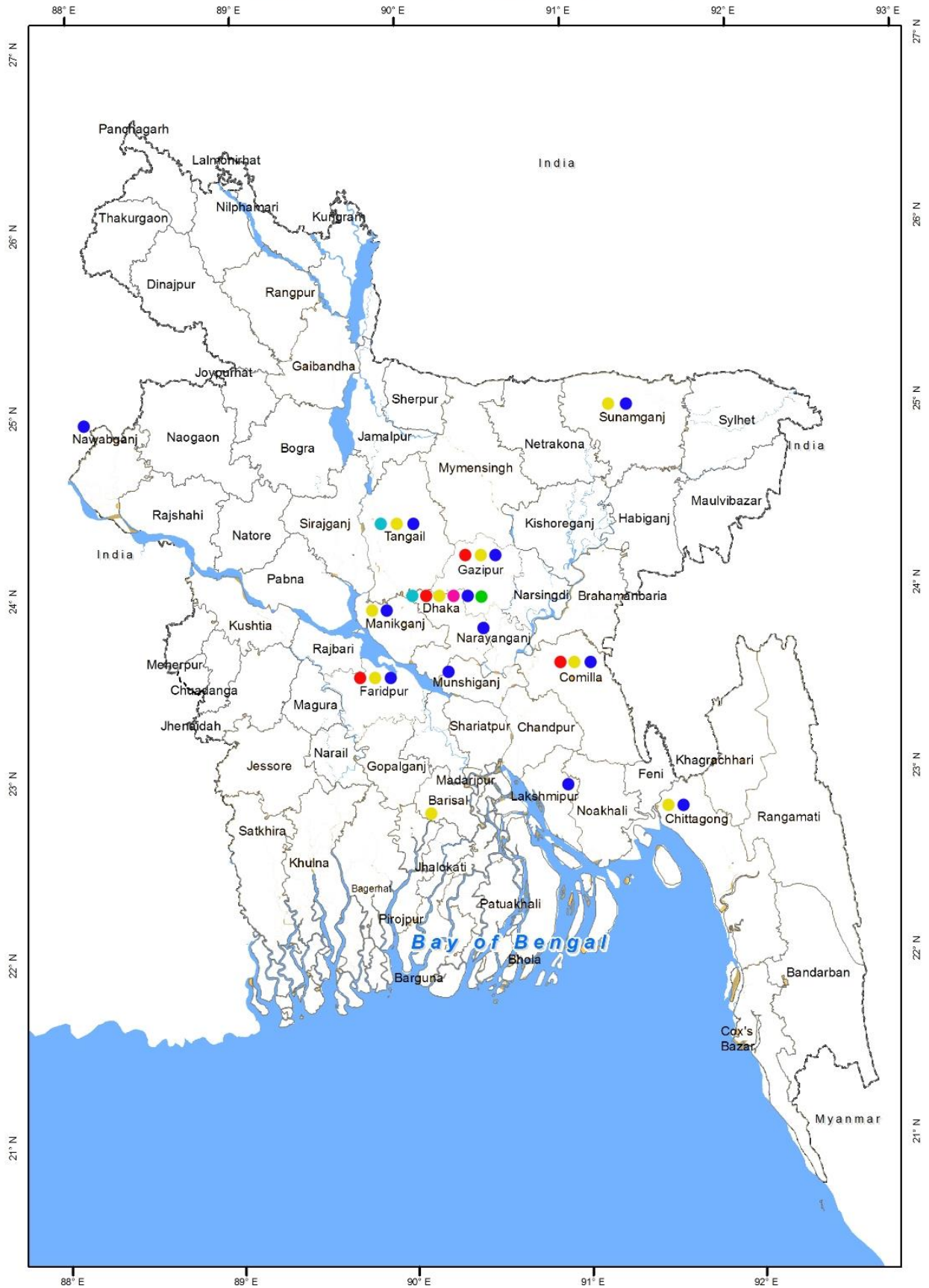
Introduction

RMMRU is a centre for evidence-based research and grassroots action. Since its inception in 1995 it has become one of the leading organisations engaged with labour migration. Over the years the organisation has worked on impact of labour migration on poverty and development, female labour migration, diaspora, climate induced migration, refugees, internally displaced and stateless persons. Through its extensive networks at the grassroots RMMRU engages in awareness and information campaign, training, mediation, reintegration of returned migrants. RMMRU partners with many leading research consortia and international networks and jointly generate new knowledge on migration and uphold the rights of migrants globally, regionally and locally.

General Body of RMMRU



RMMRU RESEARCH AND ACTION LOCATION



- Social and Economic Exclusion and Migration: Inclusion of Excluded Groups into Migration Process (SEEM)
- Migration, Sustainability and Transformation (MISTY)
- Social Cost of Migration on Families Left Behind (SCM)
- Climate Induced Migration (CIM)
- Fairer Labour Migration in Bangladesh (FLM)
- Building Resilience to Violent Extremism among Bangladeshi Migrant Workers (VEBM)

Summary of Projects and Programmes in 2019

Projects	Funder	Budget in BDT	Project Focus	Partners(s)	Location(s)
Fairer Labour Migration in Bangladesh (FLM)	PROKAS British Council	5,81,72,865	Reducing fraudulence from grassroots recruitment through regularisation of middlemen	<i>Strategic Partner:</i> IBP partners of PROKAS, BCSM Govt. Partner: MoEWOE, BMET, DEMO, WEWB, BOESL, NLASO, a2i	Dhaka, Tangail
Social and Economic Exclusion and Migration (SEEM)	DFID MJF	3,79,99,635	Increase the opportunity of socially and economically excluded groups to benefit from migration	CCDA, BFF Autonomous body: NHRC	Dhaka, Cumilla, Gazipur, Faridpur
Building resilience to violent extremism among Bangladeshi migrant workers	UNDP	30,17,115	To locate type intervention used by the extremist and develop mechanism to counter such interventions.	N/A	Dhaka, Cumilla, Chattogram, Gazipur, Tangail, Manikganj, Barisal, Faridpur, Sunamganj
Migration, Sustainability and Transformation (MISTY)	University of Exeter	48,93,352	To expand knowledge of transformations by incorporating migration dynamics	N/A	Dhaka Metropolitan City
Social Cost of Migration on Families Left-behind (SCM)	SDC	84,86,510	To know the livelihood condition of left behind families.	N/A	Chattogram, Cumilla, Dhaka, Faridpur, Gazipur, Lakshmipur, Manikganj, Munshiganj,

Climate Induced Migration (CIM)	PROKAS Project of British Council	1,924,400	Advocacy for the adoption of National Strategy by the government.	N/A	Narayanganj, Chapainawabganj, Sunamganj, Tangail Dhaka
---------------------------------	-----------------------------------	-----------	---	-----	---

Services to migrants and their families

RMMRU field interventions include awareness and information campaign, skills training of aspirant migrants, reskilling of returned migrants, social and economic assistance to left behind family members of migrants, facilitate mediation among cheated migrants and agents, extending legal support, counseling and referral services to migrants and their family members, providing emergency assistance to returnees and helping reintegration efforts of all types of returned migrants.

In 2019, 25,000 aspirants, departing and returnee migrants as well as members of their families received information, referral support, legal support, counseling services from RMMRU. Awareness campaign is done through courtyard meeting, miking, observation of special days, posters, leaflets and tea stall meeting etc. Migrant Rights Protection Committee (MRPC), Grievance Management Committee (GMC), Advisory Committee, Youth Volunteer Groups, RMMRU staffs and partner organisations jointly provide these services. In addition, in collaboration with Access to Information (a2i) programme of the government 1,200 potential migrants from all over Bangladesh have received migration processing related information by dialing 333 in the Union Digital Centers (FLM and SEEM project).

RMMRU provided support to 168 aggrieved migrants or their families to recover TK, 58,73,000 from *dalals* and recruiting agencies. It employs three types of methods to recover money from agents. Those include village level mediation through Grievance Management Committees (GMCs), union level mediation through MRPCs and arbitration by Legal Support Cell jointly managed with BMET and WEWB. In 2019 village level GMCs have received 170 complaints for mediation. They have resolved 45 of these complaints and the rest are under process. MRPCs operational at union level have resolved 47 cases during this period. With the help of Legal Support Cell, 76 cases have been resolved (SEEM, FLM).

In 2019, 22 episodes of *Obhibashir Adalat* have been broadcast in DBC Channel. This year *Obhibashir Adalat* completed 50 episodes as the programme started at the end of 2017. 68 victims have placed their cases directly in the programme in the presence of a lawyer, a government functionary and a migration expert. During the programme the cases are analysed and victims are advised ways to avail justice. Another 440 complaints have been received through telephone. The TV programme was



A GMC member participating in mediation



support center at Dakkhinkhan

The number of complaints by aggrieved migrant to BMET arbitration cell has doubled since RMMRU began broadcasting the TV programme **Obhibashir Adalat** in DBC Channel.

Dr. Nurul Islam, Former
Director of BMET

My employers never paid me any salary. When I returned I was financially ruined. The MRPC of RMMRU and CCDA arranged a cow fattening training programme for me. I have taken loan from my relatives and now raising a few cattle. I am investing my time heavily on this. Hopefully I will be able to run my family from this income.

– Hashi, Daudkandi.

viewed by around 2,86,00,000 persons (FLM).

In 2019, 1,761 male and female migrants received pre decision and pre-departure training in three districts through 29 training sessions. 35 returnee migrants have received business advisory and entrepreneurship training. These trainings have been organised in collaboration with Department of Youth Development and TTC (FLM and SEEM project).

This year RMMRU established a support center at Dakkhinkhan in close vicinity of the Hazrat Shahjalal International Airport for providing emergency support to those women who return in distress situation. This is again a collaborative programme with Wage Earners' Welfare Board (WEWB) and Wage Earners' Welfare Desk (WEWD) of this airport. It offers shelter, food, medical treatment (Psychological and physical), and transportation and communication assistance. This year 2,148 migrants (male-1,773 & female-375) received food support, 15 migrants (male- 4 & female-11) got medical treatment, 36 migrants (male-11 & female-25) received accommodation support and 40 migrants (male-08 & female-32) received transport support from RMMRU (SEEM project). Along with this 390 vulnerable migrants connected with RMMRU through 01911744624 hotline. Referral services were provided to those people on one-to-one basis (FLM Project).

Achievements

In recognition of its knowledge on climate change related migration and use of migration as the adaptation tool, the United Nations Platform on Disaster Displacement (UNPDD) has invited RMMRU in its advisory board in June 2019. On behalf of RMMRU its founding chair Dr, Tasneem Siddiqui spoke in the official working session on Disaster Displacement and DRR at the 6th Global Platform on Disaster Risk Reduction organised by United Nations Office for Disaster Risk Reduction (UNDRR).

This year as well, RMMRU has contributed to the policy and law framing process of Bangladesh government. In December 2019 it completed revision of the 2015 draft of the National Strategy on the Management of Disaster and Climate Induced Internal Displacement (NSMDCIID). It incorporated various principles articulated by UN bodies and others since 2015 on this issue. The State Minister, Dr. Md. Enamur Rahman of the Ministry of Disaster Management and Relief personally received the document and assured that very soon the Ministry will adopt the document (CIM).

The 4th *Shonar Manush Shommilon* was celebrated in April 2019.

I was completely traumatised when I came back from Saudi Arabia. I was not in my senses when I arrived. Later I learnt that RMMRU picked me from the airport, put me up in a shelter at Dakkhinkhan and admitted me in the hospital. Later my family arrived and received counselling from RMMRU. After a few days I went to my village.

– Name withheld



17 persons, including migrants, left behind husband, wives and children and service providers were honoured. Minister of Planning M A Mannan, MP, National Professor Dr. Anisuzzaman, Mr. Md. Israfil Alam, MP and member of migration caucus, Dr. Hossain Zillur Rahman, former advisor of Caretaker Government, Mr. Selim Reza, Former DG, BMET. Prof. Mustafizur Rahman of CPD, Dr. Atiq Rahman of BCAS and Dr. Saleemul Huq of ICCCAD among others joined the festivities. RMMRU reiterated the need for declaring a Migration Decade in this programme. All participants including the Minister were enthusiastic about the idea and advised to follow it up through drawing up concrete proposal.

The GoB is working towards transforming the country into a middle-income country. Declaring a decade of migration is likely to support the process.

- Ms. Judith Herbertson,
Country Head, DFID, UK

This year RMMRU designed an arbitration module for BAIRA. It is expected that by using this module BAIRA can conduct arbitration in conflicts between its members as well as between recruiting agencies and an aggrieved migrant client. Through review of code of conduct of the recruiting agencies of other countries and ILO standards as well based on the needs of the government and BAIRA, RMMRU prepared the Code of Conduct. It was handed over to Executive Committee of BAIRA.



ADFM Annual Meeting 2019

(<http://www.rmmru.org/newsite/impact/policy-influences/>)

In 2019 RMMRU has become an elected Executive Committee member of the 9th General Forum of Migrant forum in Asia (MFA). All the year round RMMRU representatives presented papers and gave talks in events such as the annual conference of NTS-Asia based in Singapore, ADFM conference on refugees held in Jakarta Indonesia, regional consultation of MFA on recruitment reform held in Bangkok, CSAS and Rule of Law Asia meeting at Nepal and Sub-regional consultation Jointly organised by MFA and Solidarity Center on the implementation of the global compact for safe, orderly and regular migration (GCM) at Nepal. RMMRU took active part in preparation of CSO position paper of MFA prepared for Abu Dhabi Dialogue Process and Colombo Process. As the secretariat of BCSM, RMMRU was one of the co-organisers of a side event on the Situation of Women Domestic Workers at the 12th GFMD held at Marrakesh in 2019.



12th GFMD

The highly acclaimed year ending annual press conference of RMMRU that assesses achievements and challenges of migration sector, was organised on the 28 December. It was attended by 85 journalists of electronic and print media. 13 electronic and more than 15 print media carried news based on the report. One of the newspapers even published three news items from the report on the same day (Daily Star). The press conference was chaired by the Chair of RMMRU Dr. Shahdeen

Please forward your proposal for Declaration of a Migration Decade to me in writing. If need be I will forward this with my comments to the honourable Prime Minister.

- Mr. M A Mannan, Minister
for Planning, GoB).

Malik. Dr. Tasneem Siddiqui presented the report and both of them responded to the quires of the journalists.

All the above efforts of RMMRU brought about a major change to establish good governance, protection of migrants' rights and ensure access to justice.

Innovations

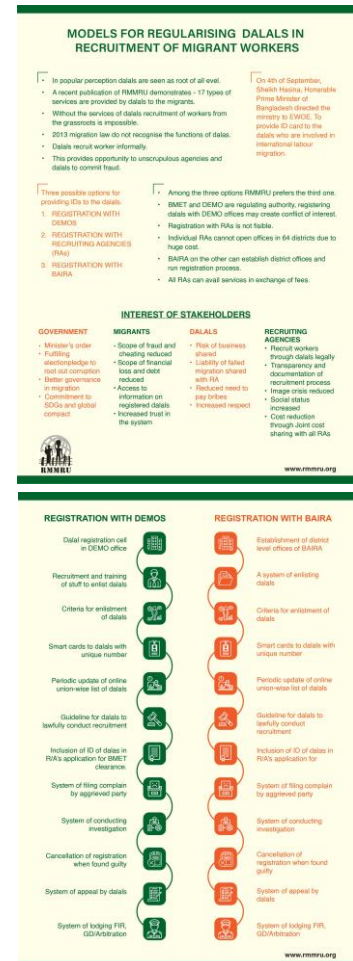
The government is looking for ways on how to bring *dalals* under formal regulations. On the basis of the research titled, *Making Dalals Visible: Towards Transparency in Recruitment*, RMMRU developed a model on this issue. RMMRU model explored three mechanisms for formalizing *dalals*. Those are registration with DEMO, registration with the recruiting agency and finally registration with BAIRA. Among these three, the most feasible is registration with BAIRA. The model on registration with BAIRA identified 12 specific steps. These include establishment of district level offices of BAIRA, a system of enlisting *dalals*, smart card to *dalals* with unique number, guidelines for *dalals* to lawfully conduct recruitment, inclusion of ID of the *dalal* in R/A's application form, system of filing complaint by aggrieved party, system of conducting investigation, cancellation of registration when found guilty, a procedure of appeal by *dalal*, system of lodging FIR/GD/Arbitration. The model is an innovation of RMMRU which needs to be popularized.

<http://www.rmmru.org/newsite/publications/infographic/>

New Knowledge

The research on Safe and Sustainable Cities Inclusive of New Migrants finds that, migrants' experience of wellbeing and human security in Chattogram city is diverse. The outcomes are both positive and negative. 80 percent are satisfied with their migration decision to the city. Almost all of them again endured anxiety, worry, hopelessness and depression. Migrants are not a homogenous group. Therefore, their exposure to a variety of social, economic and environmental risks differs on the basis of their geographic location, sex, ethnicity and type of work. (Safe and Sustainable Cities)

A survey of 264 migrants from Gazipur, Manikganj, Tangail, Cumilla, Chattogram, Barisal, Faridpur and Sunamganj purposively selected from a larger data set shows that vulnerability of Bangladeshi migrant workers to radicalisation in destination countries remains a low-level threat as they are not sought after by terrorist groups. However, their vulnerability could increase as they are exposed to social media. Compared to pre-migration situation male migrants are 4 times more and female



a2i RMMRU MoU signing

migrants are 6.5 times more exposed to social media after they migrate for work.

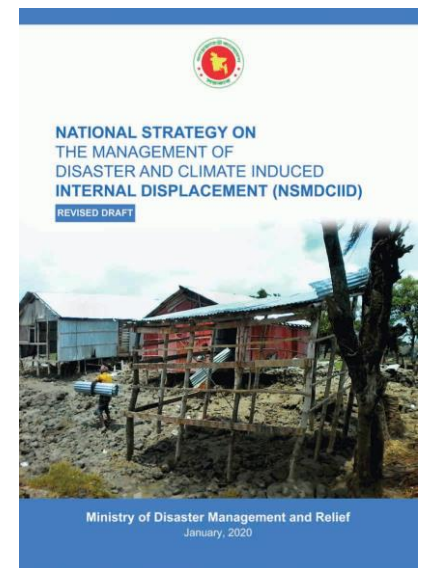
A qualitative study on Dhaka city finds that sustainability of a city has been defined by the migrants as more opportunity for city dwellers, improved services for city dwellers, improved traffic control and less pollution. The main challenges identified by upper class participants are: lack of open space, uncontrolled breeding of mosquito, sound and air pollution, traffic congestion, lack of training on civic culture and unplanned construction. The slum dwellers highlighted more on high cost of food, exorbitant rent for accommodation, inundation of roads during monsoon season. (Migration Transformation Research)

Changes in policy

After a prolonged campaign by RMMRU and a few other NGOs such as WARBE and BOMSA a section of senior officials of Home and EWOE Ministries are realising the need for bringing the sub-agents (*dalals*) under formal regulation. The Minister while receiving the RMMRU book on *dalals* stated that this was something he was also looking into. Finally, on 4th September 2019 the Honourable Prime Minister directed the MoEWOE to provide ID card to the middlemen/*dalals* who are involved in international migration. RMMRU considers this as a great leap forward.

Members of Chattogram City Development Authority (CDA) took part in RMMRU and Exeter University's action research entitled Safe and Sustainable Cities inclusive of new migrants using the innovative research method of photo elicitation. In this research the CDA city planners, City Corporation members and the new migrants took photos of the problems that they would like to be addressed in future city planning. Later they exchanged their views as to why they had perceived the particular problem and gradually jointly selected the most important ones. The CDA appreciated this experience and later came to an agreement with RMMRU and Exeter University to train them in this method so that they can apply the method in their upcoming revision of City Development Plan. RMMRU considers this as a great success in incorporating the voice of migrants in city planning.

BCSM members handed over a memorandum to the former Secretary of Ministry of EWOE concerning the state of female migrants in the Gulf and other Arab states. The secretary made a commitment and later initiated the double screening recruitment system. The recruiting agencies now have to take the responsibility of female migrants for the full contract period instead of first three months.



Annual Meeting of NTS Asia 2019

Current campaigns

The most important campaign of 2019 was call for declaration for a migration decade. RMMRU organised an international conference on 27 and 28 July 2019 to rigorously assess the need to declare 2021 to 2030 as the decade of migration. All international participants and academics and social scientists as well as policy makers supported the idea. The conference participants identified that migration is a complex phenomenon and it requires multi-faceted actions by different ministries, civil societies, private sectors, development partners etc. Therefore, declaration of a decade of migration will provide adequate time to streamline recruitment, reduce financial and social cost of migration, ensure protective measures for female migrants, ensure better services by the embassy in the destination countries, reduce scope of irregular migration and also design and implement a programme for reintegration of returned migrants. RMMRU plans to advance this campaign over the years.

There have been attempts by some quarters to securitise the international labour migrants as potential foot soldiers of violent extremist forces. Findings of RMMRU research show that vulnerability of migrants to radicalization remains very low. Since then RMMRU is campaigning in different forums for securitising migration. RMMRU pursued the campaign by presenting a paper in the National Conference organized by Counter Terrorism and Transitional Crime (CTTC) of Bangladesh Police. The conference was on Preventing and Countering Violent Extremism 2019. UNDP floated a competition on preparation of an app by using RMMRU research findings. It is done under UNDP Digital Khichuri Programme. This has resulted in creating greater awareness among the computer savvy young generation (EMVE).

RMMRU is the secretariat of BCSM. On behalf of BCSM a memorandum on civil society position on reopening of the Malaysian labour market was developed and handed over to MoEWOE and the Parliamentary Caucus on Migration. It highlighted the need for an end to the syndication arrangement, ensuring migration at a low cost and highlighted the need for regularization of those who are already in Malaysia. Unfortunately, the Parliamentary Caucus conceded that the lobby in favour of syndication was very strong and the joint committee of the two governments could not finalise labour recruitment agreement. Under the umbrella of BCSM, RMMRU plans to continue the above demands in future.



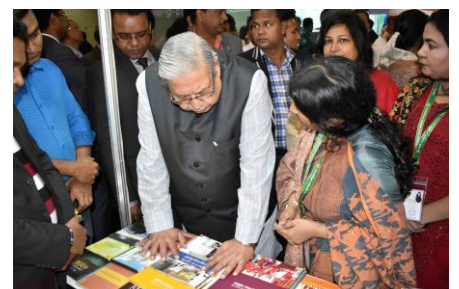
Miking and leaflet distribution at village level by youth volunteer group



Handover of NSMDCIID



CTTC National Conference on PVE



Hon'ble Minister of MoEWOE in RMMRU stall, International Migrants Day 2019

Intervention tools used by RMMRU in influencing policy at national level

Holding of local and national level festivals.

Observing special days, such as International Migrants' Day, International Women's Day etc.

Meeting with ministers, Parliamentary Caucus and key state functionaries

Holding of national and international conferences

Inception and dissemination workshops

Publication and dissemination of policy brief and infograph

Publication and dissemination of books and e-books

Opinion pieces in newspaper

Participation in TV talk shows and news programmes

Participation in international consortia and conferences

Regular posting on research findings on website, Facebook page



Advocacy with Secretary of MoEWOE

End Note: The photo used in the cover page shows handing over of a book on "Rohingya Refugees" published by RMMRU to the Malaysia's former Prime Minister Mahathir Mohamad.

Recent Publications

Books

Tasneem Siddiqui and C R Abrar (2019), *Making Dalals Visible Towards Transparency in Recruitment*, RMMRU, Dhaka.

Maung Zarni and Natalie Brinham (2019). *Essays on Myanmar's Genocide of Rohingyas (2012-2018)*, RMMRU, Dhaka

Tasneem Siddiqui (2019) *Obhibashir Okothito Golpo: Shopno o Bastobota* (In Bangla, second edition)

Book chapters and journal article

Tasneem Siddiqui (coordinating lead author) 'Labour Migration in the Hindu Kush Himalaya: A Challenge and Opportunity for Inclusive Growth in' Wester, P., et.al edited *The Hindu Kush Himalaya Assessment: Mountains, Climate Change, Sustainability and People*, 2019, ICIMOD, HIMAP, Springer.

De Campos, R., S., Codjoe, S., N., A., Adger, W., N., Mortreux, C., Hazra, S., Siddiqui, T., Das, S., Atiglo, D Y., Bhuyian, R., A., M., Rocky, M., H., Abu, M., in R J Nicholls et al (ed), 'Where people live and Move in Deltas' *Deltas in the Anthropocene*, P 153-171, Palgrave Macmillan' (2019)

Monograph and Reports

Jamila A Chowdhury, C R Abrar, Washik M. Istiak Ezaz, Nuran Chowdhury (2019) 'Strengthening the Arbitration System of Bangladesh Association of International Recruitment Agencies (BAIRA)'

Selim Reza and Marina Sultana (2019) 'Assessment of Female Migrant Domestic Workers' Housekeeping Training at the Technical Training Centres (TTCs)'

C R Abrar (2019) 'Code of Conduct of Bangladesh Association of International Recruitment Agencies (BAIRA)'

Mohammad Jalal Uddin Sikder & Selim Reza (2019) 'National Strategy on the Management of the Wage Earners Welfare Board (WEWF) in Bangladesh'

Policy Brief and Info-graph

1. Policy Brief 25, 'Safe and Sustainable Cities Migration, Security and Wellbeing'.
2. Policy Brief 26, 'The Social Cost of Migration on Left Behind Husbands, Wives and Children in Bangladesh'
3. Policy Brief 27 'National Strategy on the Management of Disaster and Climate Induced Internal Displacement'.
4. Info-graph: Models for Regularising Dalals in Recruitment of Migrant Workers

Souvenir

Shonar Manush Shommilon 2019

Media Intervention

Print Media Coverage

পুরনো শ্রমবাজার সংকুচিত মিলছে না নতুন বাজার চাই শ্রম
কূটনীতি

Samakal
C R Abrar

Date: ২৭ মার্চ ২০১৯

Link: <https://bit.ly/2zuw9ey>

রোহিঙ্গা সংকটে দরকার জনকূটনীতি

Deshru pantor

C R Abrar

Date: 19 May 2019

Link: <https://bit.ly/2TiH0zr>

অভিবাসনে সমস্যা অনেক, ব্যয় নিয়ন্ত্রণ সবচেয়ে বড়

The Daily Prothom alo

Tasneem Siddiqui

Date: ২০ মে ২০১৯,

Link: <https://bit.ly/35RSgl3>

প্রবাসী বাংলাদেশীদের কাছে ক্রমেই অসহনীয় হয়ে উঠেছে
সৌদি আরব

C R Abrar

Bonik Barta

27 June 2019

অভিবাসী ও শরণার্থী বিষয়ে পলিসি লেভেলে সতর্ক করা

সচেতনতা তৈরিই রামরু'র প্রথম কাজ

অর্থদেশ ম্যাগাজিন

Tasneem Siddiqui

Ducus Election Fiasco

The Burden of having eyes in a campus of
the blind.

C R Abrar (The Daily Star)

Date: 27-3-2019

Kashmir: The Desecrated Crown

The Daily Star

C R Abrar

October 20, 2019

Link: <https://bit.ly/2z1DWkl>

The fallen angel dances with the devil Securing justice for the Rohingya genocide

The Daily Star

C R Abrar

November 27, 2019

Link: <https://bit.ly/3q1kapr>

নারী শ্রমিক নয়, নিগ্রহ বন্ধ করুন মধ্যপ্রাচ্যে জনশক্তি

Daily Samakal

Tasneem Siddiqui

০৮ নভেম্বর ২০১৯

Link: <http://bit.ly/2KcJ8nl>

Battling climate induced displacement Urgency needed in adopting a national strategy

The Daily Star

Tasneem Siddiqui

November 02, 2019

Link: <https://bit.ly/2ZeEcqy>

Untold stories of Bangladeshi migrant workers

The Daily Star

Tasneem Siddiqui

February 17, 2019

Link: <https://bit.ly/2ZhhjTm>

Climate change creates a new migration crisis for Bangladesh

National Geographic

Date: January 24, 2019

Link: <https://on.natgeo.com/2Xn9J8D>

Quote: Tasneem Siddiqui

Brokers to be made accountable for safe migration: Marina Sultana

New age

Date Aug 30, 2019

Link: <https://bit.ly/2ZhhldW>

Quote: Marina Sultana

Global partnership stressed for safe, orderly migration

New age

Date Oct 30, 2019

Link: <https://bit.ly/2Tg9dXC>

Quote: Marina Sultana

Migrants Day celebrated

New age

Date: Dec 20, 2019

Link: <https://bit.ly/2Tg9f1G>

Quote: Marina Sultana

International Migrants Day Being Celebrated in Bangladesh

Migration News Bd

Date: Dec. 18, 2019

Link: <https://bit.ly/3dZfBu9>

Quote: Marina Sultana

Participation on Talk show

কোনো অবস্থাতেই নারী শ্রমিক পাঠানো বন্ধ করা উচিত না –
DW

Tasneem Siddiqui

কেমন আছেন প্রবাসী শ্রমিকরা? – রাজকাহন, DBC

Tasneem Siddiqui

বিশেষজ্ঞরা মনে করছেন দেশটিতে কর্মরত অবৈধ কর্মীদের
আগে বৈধতা দিতে সরকারের উদ্যোগ নেয়া উচিত। -

Somoy tv

Tasneem Siddiqui

শিগগিরই খুলছে মালয়েশিয়ার শ্রমবাজার – Somoy TV

Tasneem Siddiqui

অবৈধ শ্রমিক তাড়াতে নতুন পরিকল্পনা মালয়েশিয়ার,
বাংলাদেশীদের কী হবে?

BBC

Date: ১১ জুন ২০১৯

Link: <https://www.bbc.com/bengali/news-48596172>

Quote: Marina Sultana

সামাজিকভাবে কোণঠাসা প্রবাস ফেরত নারী শ্রমিকরা

Chanel 24

১৮ ডিসেম্বর, ২০১৯

Link: <https://bit.ly/2xWjalm>

Quote: Marina Sultana

অভিবাসীর আদালত – DBC Tv

Tasneem Siddiqui and Marina Sultana


15 Episode



Refugee and Migratory Movements Research Unit (RMMRU)
Balance Sheet
As at 30 June 2019

Particulars	Note	Amount In Taka	
		2018-2019	2017-2018
PROPERTY & ASSETS			
Non - Current Assets			
Fixed Assets	03.00	11,871,030	7,764,871
Total Non - Current Assets		11,871,030	7,764,871
Current Assets			
Cash & Cash equivalents	04.00	1,569,763	2,071,792
Investment in FDR	05.00	-	2,500,000
Loan to Project	06.00	700,000	2,510,000
Total Current Assets		2,269,763	7,081,792
Total Property & Assets		14,140,793	14,846,663
FUND & LIABILITIES			
Fund & Reserves			
Fund Account	07.00	14,140,793	13,166,632
Total Fund & Reserves		14,140,793	13,166,632
Non -Current Liabilities			
Total Non -Current Liabilities		-	-
Current Liabilities			
Fund Transferable to projects	08.00	-	1,680,031
Total Current Liabilities		-	1,680,031
Total Fund & Liabilities		14,140,793	14,846,663

The annexed notes form an integral part of these financial statements.



Executive Director
RMMRU



Treasurer
RMMRU

Signed in terms of our separate report of even date annexed

Date: Dhaka
17 November, 2019



ATA Khan & CO.
Chartered Accountants



Refugee and Migratory Movements Research Unit (RMMRU)
Statement of Income and Expenditure
For the year ended 30 June 2019

Particulars	Notes	Amount In Taka	
		2018-2019	2017-2018
Income:			
Office Rent received from projects	10.00	938,161	771,188
Utilities received from projects	11.00	217,096	156,753
Donation received	12.00	297,088	720,000
Overhead received from projects	13.00	1,066,687	663,688
Equipment Rent Received	14.00	27,391	31,304
General Body Membership Fees	15.00	10,000	12,000
Interest received from Bank		23,235	12,896
Interest on FDR		556,092	-
Sale of Car		-	970,000
Festival Subscription Fees		-	100,000
Total Income		3,135,750	3,437,829
Expenditure:			
Office Rent		1,336,713	1,269,504
Utilities		330,979	299,342
Audit Fee		60,000	-
General Body Meeting, EC Meeting , Annual Party		4,525	2,000
Accounting Maintenance fees		15,000	
Income Tax		304,389	
Bank Charges		37,663	9,581
Travel allowance, Local conveyance		19,723	16,509
Miscellaneous		19,927	6,188
Website Hosting		21,000	20,900
Renewal & Registration		-	21,750
Stationery & Supplies		533	195
Depreciation		11,137	11,137
Total Expenditure		2,161,589	1,657,106
Excess of Income over Expenditure		974,162	1,780,723
Total		3,135,750	3,437,829

The annexed notes form an integral part of these financial statements.


Executive Director
RMMRU


Treasurer
RMMRU

Signed in terms of our separate report of even date annexed

Date: Dhaka
17 November, 2019


ATA Khan & CO.
Chartered Accountants



Refugee and Migratory Movements Research Unit (RMMRU)
Statement of Receipts and Payments
For the year ended 30 June 2019

Particulars	Notes	Amount In Taka	
		2018-2019	2017-2018
Receipts:			
Opening Balance			
Cash & Cash equivalents		2,071,792	1,267,043
Cash In hand		5,000	5,000
Cash at bank		2,066,792	1,262,043
Fund received	09.00	51,016,513	39,305,156
Office rent received from projects	10.00	938,161	771,188
Utilities received from projects	11.00	217,096	156,753
Donation received	12.00	297,088	720,000
Overhead received from projects	13.00	1,066,687	663,688
Equipment rent received	14.00	27,391	31,304
General Body Membersh p Fees	15.00	10,000	12,000
Loan refund from Project		4,410,000	1,997,300
Sale of Car		-	970,000
Festival Subscription Fees		-	100,000
Interest received from bank		23,235	12,896
Interest on FDR		556,092	-
FDR Encashment		3,685,000	-
Total :		64,319,055	46,007,329
Payments:			
Fund transferred to projects	16.00	52,696,544	37,752,268
FDR		1,185,000	-
Office Rent		1,336,713	1,269,504
Accounting software		117,296	-
Accounting Maintenance fees		15,000	-
Utilities		330,979	299,342
Audit Fee		60,000	30,000
General Body Meeting, EC Meeting, Annual Party		4,525	2,000
Loan to Project		2,600,000	4,507,300
Bank Charges		37,663	9,581
Income Tax		304,389	-
Land Purchases		4,000,000	-
Travel allowance, Local conveyance		19,723	16,509
Website Hosting		21,000	20,900
Renewal & Registration		-	21,750
Stationery & Supplies		533	195
Miscellaneous		19,927	6,188
Sub Total		62,749,292	43,935,537
Closing Balance:			
Cash & Cash equivalents		1,569,763	2,071,792
Cash in hand		5,000	5,000
Cash at bank		1,564,763	2,066,792
Total:		64,319,055	46,007,329


The annexed notes form an integral part of these financial statements.


Executive Director
RMMRU


Treasurer
RMMRU

Signed in terms of our separate report of even date annexed

Date: Dhaka
17 November, 2019


ATA Khan & CO.
Chartered Accountants

