



**A TEMPLATE FOR
CLIMATE VULNERABLE FORUM COUNTRIES
TO MANAGE INTERNAL DISPLACEMENT**

Published By:

Ministry of Disaster Management and Relief
Government of the People's Republic of Bangladesh
Bangladesh Secretariat Dhaka-1000

First Published:

November, 2025

Copyright:

Ministry of Disaster Management and Relief



www.modmr.gov.bd

Design:

Aninda Jatirmay

Print:

SR Printing and Supply



A Template for Climate Vulnerable Forum Countries to Manage Internal Displacement

Ministry of Disaster Management and Relief
Government of the People's Republic of Bangladesh

MESSAGE FROM ADVISER



Faruk E Azam, Bir Protik
Adviser

Ministry of Disaster Management and Relief
Government of the People's Republic of Bangladesh

Bangladesh is one of the eleven founding members of the Climate Vulnerable Forum (CVF), a coalition that amplifies the collective voice of nations most impacted by climate change. Currently, the Forum encompasses sixty-eight countries across Africa, Asia, Latin America, the Caribbean, and the Pacific, thus representing approximately 1.74 billion individuals. Among the significant challenges faced by these nations, displacement due to climate change and disasters stands out as one of the most pressing and intricate issues.

In 2021, Bangladesh conceptualized the National Strategy on Internal Displacement Management, which has since gained international recognition as a model of best practice. In response to this collective interest, a group of committed professionals and experts from various fields worked together to develop a template for CVF Countries to cope with internal displacement. The template expectantly might aid member countries in recognizing their specific challenges, systematically assessing existing policy environments, and developing national strategies that comprehensively, inclusively, and contextually address internal displacement.

It is also expected that this collaborative effort will further enhance partnerships among CVF member countries and significantly contribute to building resilience, protecting livelihoods, and preserving the dignity of communities affected by climate-related disasters.

FARUK E AZAM, BIR PROTIK

MESSAGE FROM SECRETARY



Md. Mostafizur Rahman
Secretary

Ministry of Disaster Management and Relief
Government of the People's Republic of Bangladesh

The Climate Vulnerable Forum (CVF) is a group of countries that are the first to experience the impacts of climate-induced threats- those countries where citizens, their lives and natural environments are the worst affected by the climate crisis. The Government of Bangladesh launched the National Strategy on Internal Displacement Management at the COP26. The Strategy has since been appreciated around the world as an example of the rights-based and inclusive management of displacement due to the unfriendly effects of global climate change.

During the launching ceremony, the then Secretary General of the CVF countries requested Bangladesh to go a step further and create a template that can be used by other CVF member states to draft their respective national strategies. The request was based on the common desire of the CVF community to enhance the collective resilience, protection of the displaced populations, and long-term and country-led solutions to the displacement issues.

I am happy that our Ministry finally approved the template on 05 May 2025. I deeply appreciate the Refugee and Migratory Movements Research Unit (RMMRU), along with the International Advisory Committee, for helping us in preparing the template for the CVF Countries to Manage Internal Displacement. The template is based on the learning of the experience of Bangladesh itself and incorporates worldwide recognized concepts like the Sendai Framework of Disaster Risk Reduction, the Paris Agreement, and the UN Guiding Principles of Internal Displacement.

The offered template is a highly versatile and flexible framework that provides the CVF countries with the opportunity to review their national contexts, determine the gaps, and develop the strategies that may resonate with their national needs and priorities. It will most likely assist member states in developing consistent policies and programs that will bridge disaster risk reduction, climate adaptation and protection of human rights.

The design of this template is an essential milestone in achieving solidarity among CVF countries and in promoting our collective determination in protecting vulnerable groups in the rising effects of climate change.

Md. Mostafizur Rahman

TABLE OF CONTENTS

List of Acronyms	01
Preface	03
Executive Summary	05
01 Introduction	07
1.1 Background	07
1.2 Displacement in CVF Countries	08
1.3 Scope, objectives and strategic alignment of the Template	11
1.4 Displacement as a human rights issue?	13
1.5 The Global Policy Landscape	14
02 Guiding Questions for “Prevention of Displacement”	17
2.1 Concept and Background	17
2.2 Themes, Strategies, and Guiding Questions	17
03 Guiding Questions for “Protection during Displacement”	25
3.1 Concept and Background	25
3.2 Themes, Strategies, and Guiding Questions	25
04 Guiding Questions for “Durable Solutions”	29
4.1 Concept and Background	29
4.2 Themes, Strategies, and Guiding Questions	30
References	37

List of Tables

Table 1: Some selected policies from the CVF countries	10
Table 2: Global policies addressing the aspects of internal displacement	14

List of Figures

Figure 1 Global Internal Displacement by Disaster in Millions	08
Figure 2 Top 5 disaster vulnerable countries in 2024	09
Figure 3 Disaster induced displacement in some CVF countries	09
Figure 4 CVF countries with the most internal displacements in 2023 according to the IDMC report	10
Figure 5 Alignment of the strategic framework with the UN Guiding Principles on Internal Displacement	12

LIST OF ACRONYMS

AR	Assessment Report
CPR	Common Pool Resource
CVF	Climate Vulnerable Forum
DRR	Disaster Risk Reduction
EWS	Early Warning System
GCM	Global Compact for Safe, Orderly and Regular Migration
GOB	Government of Bangladesh
IDMC	Internal Displacement Monitoring Center
IDPs	Internally Displaced Persons
IOM	International Organization for Migration
IPCC	Inter-Governmental Panel on Climate Change
L&D	Loss and Damage
MoDMR	Ministry of Disaster Management and Relief
NORAD	Norwegian Agency for Development Cooperation
PDD	Platform on Disaster Displacement
PPP	Public Private Partnership
RMMRU	Refugee and Migratory Movements Research Unit
SDGs	Sustainable Development Goals
SEADRIF	Southeast Asia Disaster Risk Insurance Facility
SME	Small and Medium Enterprises
TFD	Task Force on Displacement
UN	United Nations
UNFCCC	United Nations Framework Convention on Climate Change
WIM	Warsaw International Mechanism for Loss and Damage

PREFACE

Bangladesh is one of the first few countries to develop its own National Strategy on Internal Displacement Management, 2021 to manage climate change and disaster induced internal displacement. It has also framed an Action Plan to Implement the National Strategy. United Nations Disaster Risk Reduction (UNDRR), IDMC, PDD and ADB have identified the National Strategy as a global best practice. Following the launch of this National Strategy in COP26, the then Secretary General of Climate Vulnerable Forum (CVF) countries requested the Government of Bangladesh to develop a template based on which other CVF member states can formulate their respective national strategies. In response to this request, as the Member Secretary of the working committee of MoDMR on the National Strategy (2021) and the Action Plan (2022-2042) the template preparation and validation process has been led by the Refugee and Migratory Movements Research Unit (RMMRU) with the assistance from the MoDMR. The same International Advisory Body which guided the preparation of the National Strategy and the Action Plan, also guided the development of the Template. The Advisory body particularly helped to conceptualize the framework and research method to be followed in this respect. They highlighted that a single format would not suit all CVF countries, so a flexible model needed one that could be tailored to the specific needs of each CVF country.

The template has created a matrix which will allow interested CVF countries to systematically review the policy landscape of the concerned country in managing internal displacement. The matrix also helps individual CVF state to identify areas requiring targeted action. Through a structured set of guiding questions, the template enables the policy framers to address the diverse needs of displaced populations.

The Template received significant input from the Secretary General of the CVF and the Managing Director of the CVF secretariat. The drafting committee received partial support from the Platform on Disaster Displacement (PDD) and The Norwegian Agency for Development Cooperation (NORAD) under the “Action and Support to Avert, Minimize and Address Displacement Related to the Adverse Effects of Climate Change” project. Two day-long workshops were held to receive inputs from concerned ministries and civil society organizations. After incorporating all the comments, the document was submitted to the ministry. In May, 2025 the Ministry of Disaster Management and Relief (MoDMR) approved the template. The template is scheduled to be launched at COP30.

EXECUTIVE SUMMARY

Background: Internal displacement caused by disasters and climate change has emerged as one of the most pressing global challenges. As a member of the Climate Vulnerable Forum (CVF), Bangladesh successfully developed its National Strategy on the Management of Disaster and Climate-Induced Internal Displacement in 2021, followed by an Action Plan for implementation in 2022. The National Strategy is recognized and endorsed by the Internal Displacement Monitoring Centre (IDMC) as a vital framework for addressing the increasing challenges of displacement. IDMC's reports highlight that the National Strategy plays a crucial role in coordinating efforts among government agencies, local communities, and international partners to address both immediate and long-term displacement in Bangladesh. Additionally, the Raoul Wallenberg Institute of Human Rights and Humanitarian Law evaluated the policy measures of 11 countries in addressing climate change and disaster-related displacement. It identified Bangladesh's National Strategy as the most comprehensive human rights-based framework. The Institute highlighted it a model for integrating human rights principles with disaster risk reduction and climate adaptation efforts. At the COP26 in Glasgow, the Government of Bangladesh (GoB) launched the Strategy to showcase the country's efforts to address the challenges of internal displacement caused by floods, cyclones, and rising sea levels.

Purpose of the Template: As the Chair of the Climate Vulnerable Forum (CVF) during COP26, the GoB urged other CVF countries to adopt similar strategies and action plans to address climate-induced displacement. In response, CVF countries expressed interest, initiating discussions on adopting a template to guide nations in implementing frameworks to manage climate-induced displacement. Subsequently, the Platform on Disaster Displacement (PDD) and NORAD extended their support to the Government of Bangladesh to partially implement the strategy domestically. As part of this effort, the Refugee and Migratory Movements Research Unit (RMMRU) took on the task developing the template to help other CVF nations in adopting similar strategies. This template aims to support CVF nations in tackling the challenges of displacement. It acknowledges the unique challenges faced by CVF countries and provides guiding questions to help tailor strategies to local contexts. In other words, the template is flexible to allow CVF countries to tailor strategies to their unique socio-political, geographic, and economic contexts.

Key Strategies and Guiding Questions: Inspired by Bangladesh's National Strategy to manage internal displacement, this template provides a strategic framework focusing on the three critical phases: prevention, protection during displacement, and durable Solutions. To ensure comprehensive and adaptable solutions, the template includes guiding questions for various activity areas within each phase. Prevention aims to reduce vulnerability and enhance resilience by addressing the underlying risks to minimize displacement. This includes strengthening early warning systems and conducting displacement hotspot mapping to identify high-risk areas. Key questions to guide these efforts include: How can existing early warning systems be localized and made more accessible? What data and resources are required for effective hotspot mapping? Additionally, livelihood diversification strategies, such as promoting disaster-resistant crops and providing accessible vocational training, are crucial for minimizing displacement risks.

The second phase- 'Protection During Displacement' focuses on ensuring the safety, rights, and well-being of displaced people. This involves providing emergency relief support, safe shelter, and access to essential services. Key guiding questions in this phase include how can evacuation plans protect vulnerable groups such as women and children? What legal frameworks are required to uphold the rights of displaced people? Governments must also provide access to vocational training and employment opportunities for displaced populations to support their livelihoods. Finally, the durable solutions phase aims to secure sustainable livelihoods for displaced people through voluntary return, local integration, or planned relocation. For this phase, critical guiding questions include: What mechanisms can support safe and informed voluntary returns? How can housing and livelihoods be restored in areas of return? When return is not possible, strategies for local integration and planned relocation must ensure security of tenure, cultural preservation, and sustainable livelihoods. Partnerships with international organizations and the private sector are essential to financing and implementing large-scale relocation efforts.

The Way Forward: In COP30 this Template will be formally launched and handed over to the Secretary General of CVF states. It is expected that the CVF Secretariat will organize consultation meetings across Africa, Asia-Pacific, the Caribbean, and Latin America to introduce the Template and CVF member states to prepare their own National Strategy. If CVF member states take concrete measures to prepare and implement a national strategy on climate change induced internal displacement it will realize the prediction of Sendai Framework, Cancun Adaptation Framework, Technical Guide of UNFCCC on Human Mobility to reduce displacement up to 80%.

01 INTRODUCTION

1.1 Background

Considering the increasing influence of climate change on displacement, migration and planned relocation, United Nations Framework Convention on Climate Change (UNFCCC) underscores that National Action Plans (NAPs) of these countries must address human mobility related challenges and opportunities (UNFCCC, 2024). The growing knowledge about their linkage has contributed in increased acknowledgement of the challenge by different global policy frameworks such as the UNFCCC, the Sendai Framework, the Global Compact for Safe, Orderly and Regular Migration (UNGA A/ RES/73/195, Annex) and the Global Compact on Refugees (UNGA A/73/12 Part II).

The IPCC Sixth Assessment Report (AR6) confirms that Earth's climate is warming at an unprecedented rate, with each of the past four decades being successively warmer than any decade preceding it since 1850 (IPCC, 2022). This warming trend is driving a cascade of changes, including rising sea levels, melting ice caps, and more frequent and intense heatwaves, storms, and precipitation extremes. Recent observations indicate that the capacity of land and ocean ecosystems to absorb atmospheric carbon dioxide has declined (Bustamante et al., 2023). This diminishing trend may result in increased atmospheric CO₂ accumulation, escalating the risk of more severe weather extremes and greater human disturbances. Vulnerable populations worldwide are at high risk due to the widespread impacts of climate change on health, water availability, agriculture, food security, livelihoods, and economic development.

The intensification of weather events and disasters, along with progressive environmental degradation from slow-onset processes, is expected to make displacement increasingly frequent, particularly as limits to adaptation are reached (Kam et al., 2021). The impacts of displacement vary significantly across geographies and economies, but individuals forced to abandon their homes worldwide face heightened vulnerability to the adverse effects of climate change. Extensive research indicates that displaced populations are among the most vulnerable to climate change, often encountering significant barriers to accessing essential resources and implementing effective mitigation measures (Effiong et al., 2024). Low and middle-income countries and small island states face unique challenges in preventing and responding to disaster displacement. Displacement and its associated crises (during and after) create urgent needs for basic services such as safe shelter, transportation, food, healthcare, education, and safety. Displaced women and other vulnerable communities face additional challenges, particularly regarding access to resources, income-generating activities, and safety (Siddiqui, 2020).

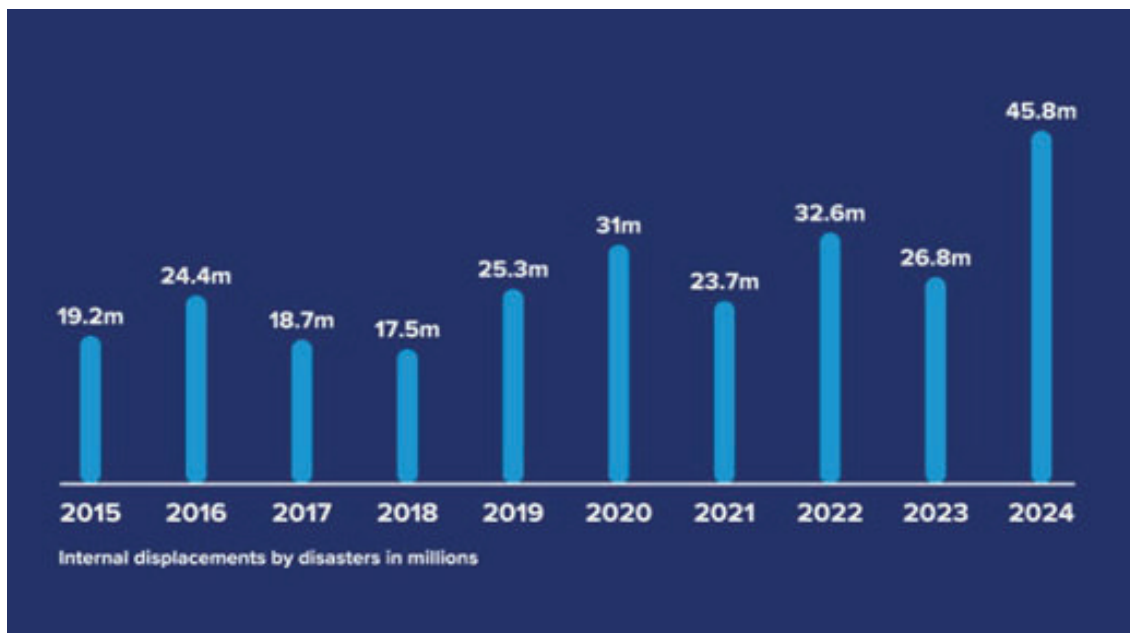
Averting, minimizing, and addressing displacement and its impacts are key components of effective climate action. Preventing future displacement requires investments in preventive actions within the fields of Disaster Risk Reduction (DRR) and climate change adaptation, including strengthening the resilience of infrastructure, livelihoods, institutions, and ecosystems. Financial resources and institutional arrangements that support planned relocation or voluntary migration can also help protect people and livelihoods. In cases where displacement is unavoidable, preparedness planning for response and recovery can help minimize its negative impacts on individuals and

communities. Finally, sustainably resolving displacement is essential to building back better after disasters and addressing loss and damage for affected communities. All these interventions require significant investments, which place additional financial burdens on national and local governments. This burden is particularly heavy for least-developed or lower-middle-income countries. Planning integrated approaches is a prerequisite for tailored and coherent interventions to address the displacement-related challenges posed by climate change impacts, compounded by poverty, inequality, unsustainable urbanization, land degradation, and erosion. This document aims to help countries tackle these issues by supporting the creation of more coherent and comprehensive approaches to displacement, leveraging resources and capacities across all relevant sectors and institutions.

1.2 Displacement in CVF Countries

The Climate Vulnerable Forum (CVF) is a global alliance of nations particularly susceptible to the impacts of climate change. The forum currently consists of 70 member countries and represents approximately 1.7 billion people worldwide (Climate Vulnerable Forum, 2024). These countries face substantial threats from climate change, including rising sea levels, unprecedented frequency and intensity of extreme weather events, and slow-onset climatic disasters. The IDMC's latest Global Report on Internal Displacement indicates a rising trend in internal displacements caused by disasters. Specifically, 2024 recorded 45.8 million displacements, the highest ever figure in the past decade for internal disaster displacements (Figure 1). Member states of the CVF are on the frontlines of the climate crisis, experiencing higher risks of climatic shocks due to a combination of factors, including geographical limitations, limited resources and infrastructure, challenges in adaptive capacity, and lack of global support.

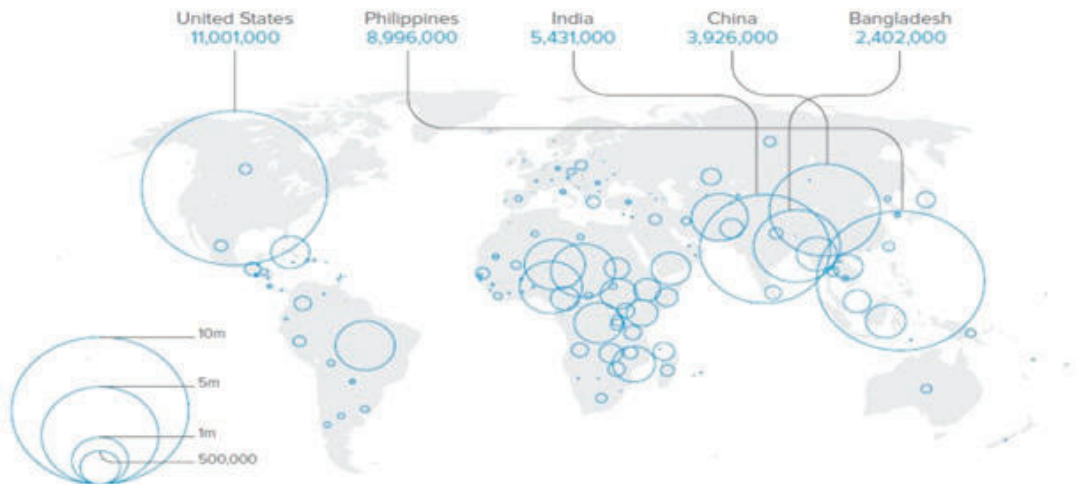
Figure 1 Global Internal Displacement by Disaster in Millions



Source: IDMC, 2025

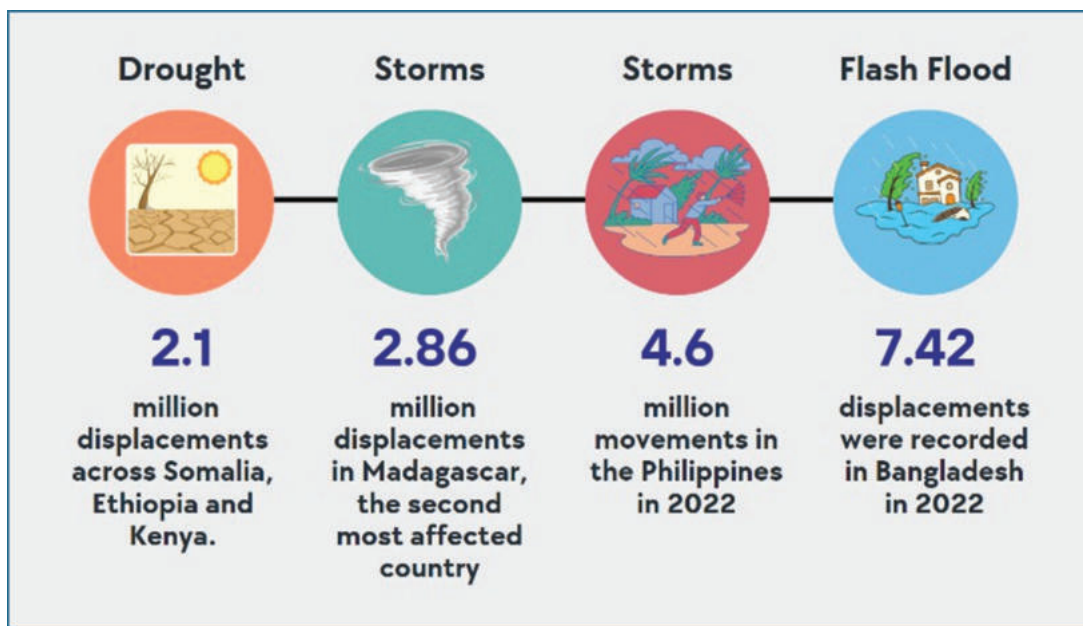
Figure 2 Top 5 disaster vulnerable countries in 2024

Five countries reporting the highest figures



Source: IDMC, 2025

Figure 3 Disaster induced displacement in some CVF countries



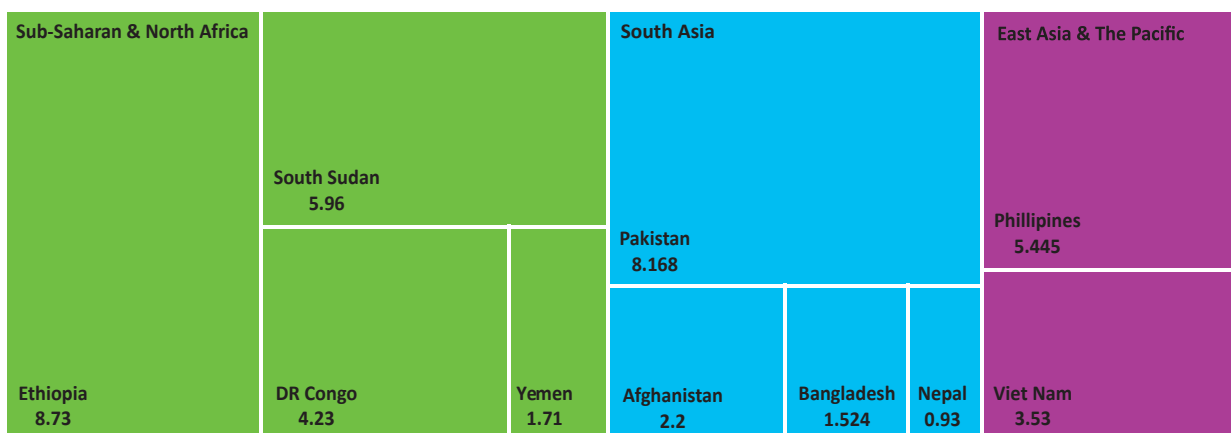
Source: IDMC, 2025

Figure 2 shows that two CVF countries, the Philippines and Bangladesh belong to the 5 top countries which accounted for the highest number of displacements (IDMC 2025). Both slow-onset events (e.g., drought) and sudden-onset events (e.g., cyclones and floods) have contributed to internal displacements in CVF countries. Droughts increasingly threaten livelihoods, forcing people to move as agriculture becomes unsustainable. For instance, in Ethiopia and Kenya, millions of people have been displaced in recent years due to prolonged droughts. Such slow-onset events also increase competition over basic resources and accelerate conflicts at local and regional levels. Recovery from slow-onset disasters like droughts typically takes several years. On the other hand, sudden-onset disasters pose immediate threats to life and livelihoods. For example, more than 8 million people in Pakistan were displaced in 2022 due to floods. According to IDMC, in 2025, among the CVF countries, the Philippines experienced the highest number of disaster-related internal displacements. 8.9 million Pilipino were displaced in 2024.

Figure 4 CVF countries with the most internal displacements in 2023 according to the IDMC report.

CVF Countries with most international displacement (in million)

■ Sub-Saharan & North Africa ■ East Asia & The Pacific ■ South Asia ■ The Americas



Source: CVF, 2022

Given the data above, it is essential to enhance adaptive capacities and resilience among member countries to reduce the impacts of climate-related displacement and involuntary migration. The recent CVF Climate Laws Report highlights significant gaps in the legal frameworks of CVF countries regarding climate change adaptation, mitigation, and resilience (CVF, 2022). According to the report, 39% of CVF countries have laws specifically linked to climate change adaptation. However, only 17% of these countries have laws addressing adaptation, mitigation, and resilience collectively, indicating a limited comprehensive approach to climate action. Furthermore, the report reveals that only 27% of CVF countries have laws specifically linked to resilience. Despite these findings, the majority of CVF countries have climate policies related to adaptation, demonstrating a commitment to addressing the challenges posed by climate change. Of particular concern is the lack of explicit policies or legal frameworks on managing displacement or integrating the issue into overall climate policies across CVF countries. Only Bangladesh, Fiji, and Vanuatu have either explicit policies on managing displacement or have integrated the issue into their broader climate policies (GoB, 2021; UN Women, 2020; Moore, 2023).

Table 1: Some selected policies from the CVF countries.

CVF Country	Existing Policy Landscape	Gaps
Philippines	The Philippine Disaster Risk Reduction and Management Act has a strong focus on disaster preparedness, risk reduction, and emergency response measures.	<ul style="list-style-type: none"> Not explicit in terms of legal protection for IDPs. Inadequate attention to slow-onset events.
Maldives	National Disaster Management Act focuses on emergency relief and recovery.	<ul style="list-style-type: none"> No legal framework focusing on displacement risks due to sea level rise.
Kenya	DRR and response are adequately covered in the National Policy for Disaster Management.	<ul style="list-style-type: none"> Drought-induced displacement issues are not covered. Long-term rehabilitation and protection of IDPs are not addressed.

Source: CIDS, 2025; CFE-DM, 2024; & NDOC, 2025

Given the frequency of disasters and related displacement in CVF countries, there is an urgent need to prioritize the development and implementation of comprehensive frameworks that address displacement within the context of climate change adaptation, mitigation, and resilience. Addressing policy gaps requires concerted efforts to strengthen legal frameworks, enhance policy coherence, and integrate displacement considerations into broader strategies for climate change and disaster risk management. It is also essential to incorporate the issues of loss and damage into the policy and legal frameworks associated with internal displacement. In the context of climate change, displacement is often the result of the economic and non-economic losses that people and households endure. In some cases, damage is irreversible, leading to long-term or permanent displacement. Therefore, a coherent and uniform framework is of paramount importance for countries facing the threats of displacement and forced migration. This framework should integrate transformative adaptation measures and align them with overall sustainable development goals.

1.3 Scope, objectives and strategic alignment of the Template

This template provides guidance for CVF countries to develop policies that comprehensively address displacement. To ensure its relevance for countries with different contexts and needs, it includes guiding questions for each of the key thematic areas identified. These questions serve as a framework to develop effective and relevant solutions, helping decision-makers assess the unique risks, vulnerabilities, capacities, and needs of their countries. This approach is essential for developing strategies that are adaptable and responsive to local conditions. Given the limited financial, natural, and technical resources in many CVF countries, it is imperative for governments to strategically integrate efforts across disaster risk reduction, climate change adaptation, and sustainable development goals. The template aims to incorporate internal displacement issues within broader frameworks supporting long-term development, climate change adaptation measures, and disaster risk reduction interventions.

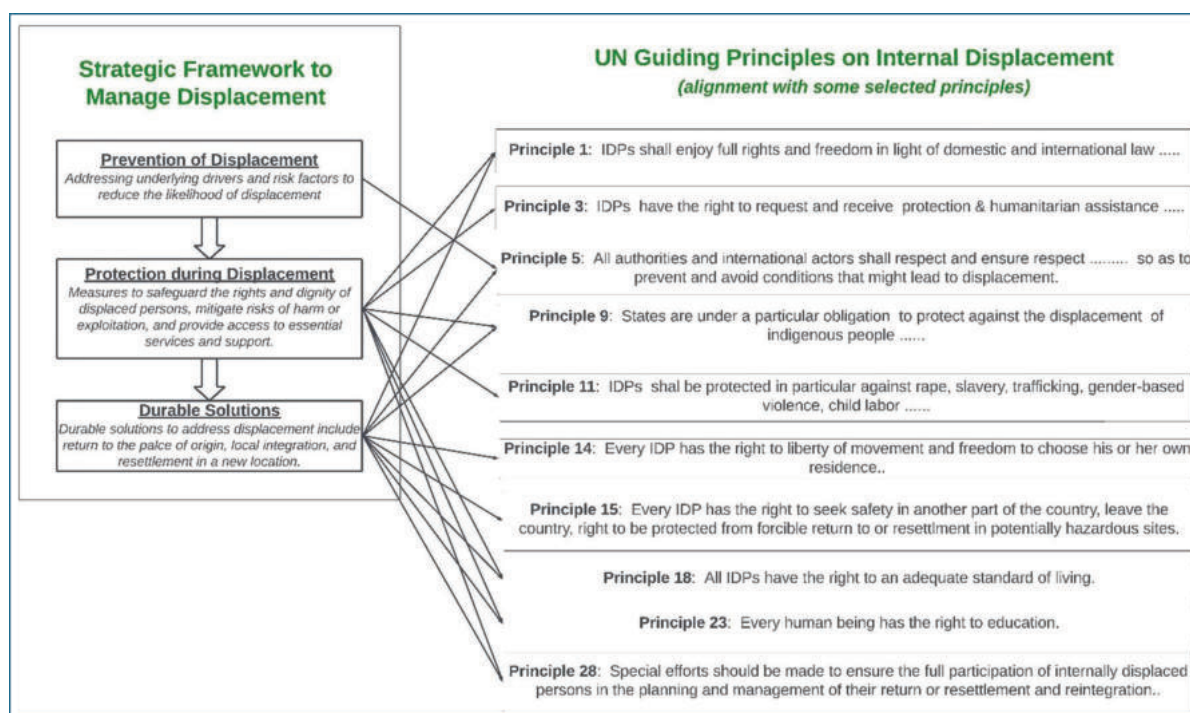
It is well recognized that CVF countries vary in governance, geography, economy, society, and culture. However, they share common concerns regarding climate change and its impact on displacement. Not all elements of the template will be equally applicable to every CVF country due to differences in environmental, economic, geographic, and cultural specificities. A standardized template, leveraging the experiences of climate-vulnerable countries with solid institutional setups, can support coherence and consistency in addressing climate-induced displacement through comprehensive approaches across all CVF member states. Rather than starting from scratch, countries can use the template as a starting point, customizing it to their specific contexts and needs. The template adopts an integrated approach encompassing various dimensions of addressing displacement in the context of climate change's adverse effects. It covers responses at all stages of displacement: prevention of displacement, protection of displaced persons, and durable solutions. This includes interventions such as risk assessments, early warning systems, emergency responses, and long-term adaptation and resilience-building measures.

The template aligns with global standards for addressing climate-induced internal displacement, including relevant international agreements, guidelines, and frameworks such as the Paris Agreement, the Sendai Framework for Disaster Risk Reduction, and the Guiding Principles on Internal Displacement. Relevant policies have been identified above. The template is also

flexible enough to accommodate future policy developments. For example, as arrangements for finance and support for Loss and Damage evolve, this template can help integrate these topics into national frameworks and institutions. By providing a structured framework for action, the template can facilitate coordination and collaboration among countries, enabling them to share best practices, lessons learned, and resources effectively. It will help address the pressing issue of internal displacement within CVF countries, which host 1.7 billion of the world’s poorest people who are disproportionately affected by climate change.

The template will contribute to integrating adaptation and resilience measures into the national climate change plans and strategies of CVF countries. Using the template to support national policy development can also help countries advocate for increased financial support and build the capacities needed to request and secure financial and technical assistance from the international community in managing displacement.

Figure 5 Alignment of the strategic framework with the UN Guiding Principles on Internal Displacement.



Source: GoB, 2022 & UN, 2022

The template lists guiding questions for each of the key strategies for managing internal displacement, helping frame country-specific analyses that serve as the foundation for developing a strategy. It highlights strategies that incorporate all relevant principles outlined in the United Nations Guiding Principles, particularly as they relate to disasters and the adverse effects of climate change (Figure 3). Displacement is the form of human mobility with the greatest relevance and most direct implications for current discussions on Loss & Damage (L&D). While there is no universally agreed-upon definition of L&D, it is generally understood to refer to the consequences of climate change that exceed the capacity of people and communities to adapt. There is a need for stronger inclusion of displacement in L&D policies and discussions at the national level and within UNFCCC negotiations. Displacement represents both a consequence of the L&D incurred by climate-vulnerable people and a form of L&D for those displaced. It also acts as a driver of L&D for all affected people.

CASE STUDIES –VANUATU & BANGLADESH

Vanuatu, a chain of 82 volcanic islands, is highly vulnerable to Pacific cyclones. In 2015, Tropical Cyclone Pam displaced 65,000 people, prompting the government to develop the National Climate Change and Disaster-Induced Displacement Policy in 2018. As the first policy solely focused on managing internal displacement, it covers the full displacement cycle—prevention, protection, and recovery—emphasizing governance, land management, infrastructure, food security, gender responsiveness, and community participation.

Similarly, Bangladesh, frequently affected by floods, cyclones, and river erosion, has taken proactive steps to address displacement. The government introduced the National Strategy on Internal Displacement Management (2021) and the National Action Plan (2022-2042) to Implement the National Strategy on Internal Displacement (2022). Developed through a participatory process, these rights-based policies focus on prevention, protection and durable solutions. Key Strategies include strengthening climate adaptation and disaster risk reduction, ensuring displaced communities' security, human rights and humanitarian support, and promoting voluntary return, local integration, and planned relocation.

Both nations' strategies highlight a forward-thinking approach to climate resilience and displacement.

L&D suffered through displacement can be short-term or long-term, economic or non-economic, direct or indirect. The impacts of displacement result in additional L&D for displaced people and other communities in places of origin and destination, including areas far from those initially affected by the adverse effects of climate change. As highlighted by the Task Force on Displacement, ignoring displacement and its consequences widens the gaps between L&D needs and available funding, undermining the effectiveness of relevant responses (C2ES, 2023). This template navigates the complexities of displacement and L&D by reflecting priorities in humanitarian action, disaster risk reduction, migration governance, conflict prevention and peacebuilding, durable solutions, and sustainable development. Despite significant progress in addressing the intersections of displacement and L&D within the framework of UNFCCC, gaps remain in the provision of action and support, creating obstacles to effective response. The template contributes to addressing these gaps by facilitating integrated and coordinated actions. It will provide the basis for a comprehensive legal framework for CVF member states, offering specific guidance on liability, compensation, and support mechanisms for affected communities.

1.4 Displacement as a human rights issue?

Displacement induced by climate change and disasters is a human rights issue. Climate change profoundly alters the hydrological cycle and weather patterns, including the frequency and intensity of extreme weather events. Cyclones, floods, and droughts threaten the lives and livelihoods of individuals and communities. Displacement further exacerbates these risks, compromising security and undermining livelihoods, which are often closely tied to having a permanent place of residence. Climate change can worsen health issues, particularly for displaced populations who may lack access to clean water, sanitation, and healthcare services in their new settlements. Poor living conditions in displacement sites can lead to disease outbreaks and other health problems, severely violating their right to health. Access to safe housing, a basic human right, is also significantly affected during displacement (Siddiqui, T. et al., 2018).

The food security of displaced populations is a serious concern. Loss of access to food and clean water is a common challenge faced by displaced people and other communities affected by their displacement (Siddiqui, T. et al., 2021). For children and young people displaced by climate change, disruptions in education are widely reported. Schools may become inaccessible from their new locations, and displaced families may prioritize immediate survival over schooling. Displacement also leads to loss of employment and livelihoods. Those who depend on land and local natural resources for income face significant financial setbacks, affecting their right to work and earn a living. Numerous studies recognize that Indigenous people and local communities have unique cultural ties to their land. Displacement can sever these ties, resulting in the loss of cultural heritage, identity, and traditional knowledge, thereby infringing on their cultural rights. Additionally, displaced individuals often face discrimination in their new settlements. This can take the form of restricted access to services, social exclusion, and xenophobia. Such discrimination disempowers individuals and communities, limiting their ability to participate in decision-making processes and reducing their representation. Many displaced people lack legal recognition or protection in host countries, and even within countries, the portability of rights is not always guaranteed. This absence of legal status compounds their vulnerability to various human rights violations, including exploitation, trafficking, and denial of access to justice and legal protection.

1.5 The Global Policy Landscape

Governments, international organizations, and civil society are increasingly acknowledging the need to address the impacts of climate change on displacement. Key processes and initiatives are shaping the evolving global policy landscape, with growing recognition and integration of displacement issues into international, regional, and national frameworks. CVF countries are at the forefront of these efforts, advocating for enhanced global action and implementing innovative policies to tackle the challenges of climate-induced displacement. The table below provides an overview of the global policy landscape concerning the intersection of displacement, disasters, and climate change.

Table 2: Global policies addressing the aspects of internal displacement.

Policy	What is addressed?
United Nations Framework Convention on Climate Change (UNFCCC)	<p>UNFCCC Technical Guide (2024): The Technical Guide sensitizes the stakeholders to include human mobility elements in adaptation planning/strategies and communication and suggests key steps for mainstreaming human mobility into NAPs and adaptation communications in particular.</p> <p>Paris Agreement (2015): Recognizes climate-induced displacement and calls for adaptation and resilience-building measures.</p> <p>Task Force on Displacement (TFD): Established under the Warsaw International Mechanism for Loss and Damage to provide recommendations to avert, minimize, and address displacement related to climate change.</p>

Policy	What is addressed?
	<p>Warsaw International Mechanism for Loss and Damage (WIM): The Warsaw International Mechanism works to promote approaches to avert, minimize, and address loss and damage. This includes working on human mobility in the context of climate change. International cooperation and knowledge-sharing are key elements of this approach.</p>
Sendai Framework for Disaster Risk Reduction (2015-2030)	<p>Aims to reduce disaster risk and enhance resilience, including addressing the needs of displaced populations. It lays out a diversity of measures that can be taken to prevent, prepare for, and address displacement.</p>
Guiding Principles of Internal Displacement, 1998	<p>It is a comprehensive rights-based framework for internal displacement. It establishes the rights of the IDPs and the protection measures for displaced persons, including those who are displaced by disasters and the impacts of climate change. It mentions that <i>“internally displaced persons shall enjoy, in full equality, the same rights and freedoms under international and domestic laws as do other persons of the country. They shall not be discriminated against in the enjoyment of any rights and freedoms on the ground that they are internally displaced.”</i></p>
The Nansen Initiative (2012)	<p>The Nansen Initiative Protection Agenda is a non-binding framework laying out key protection measures for people displaced across borders in the context of disasters and climate change. It stresses that states have a primary duty to protect their populations and give particular attention to the specific needs of the people most vulnerable to and most affected by climate change and other environmental hazards, including the displaced, hosting communities, and those at risk of displacement. It highlights national and international policies and responses that can be implemented to address disaster displacement, on the basis of non-discrimination, consent, empowerment, participation, and partnerships with those directly affected, with due sensitivity to age, gender, and diversity aspects.</p>

Policy	What is addressed?
Global Compact for Safe, Orderly and Regular Migration (GCM) (2018)	<p>Displacement is not addressed explicitly, However, the objectives below to some extent cover displacement.</p> <p>Objective 2: Addresses the drivers of migration, including climate change, natural disasters, and environmental degradation.</p> <p>Objective 5: Highlight the need to establish migration pathways as a way to support safe and dignified movements, including from climate-affected areas.</p> <p>Objective 23: Calls for strengthened international cooperation and partnerships to address migration challenges.</p>
UN Sustainable development Goals (2015-2030)	Achieving the SDGs is essential to addressing the underlying conditions that lead to displacement, as well as promoting conditions that enable durable solutions to existing displacement. For instance, SDG 11 talks about making cities and settlements more safe, inclusive, and resilient.
Kampala Convention (2009)	The African Union Convention for the Protection and Assistance of Internally Displaced Persons in Africa, the first legally binding instrument to protect IDPs, explicitly mentions the need to protect those forced to move in the context of disasters and climate change.
Pacific Regional Framework on Climate Mobility (2023)	This framework encourages Pacific Island States to incorporate displacement issues into relevant national policies and legal frameworks.
Urban Competency Framework: Research Report by Global Alliance for Urban Crises (2019)	The focus is on displacement and property rights issues in urban contexts. It highlights developing the skills to meet the needs of urban populations in crises through the alliance of urban responders.

Source: UNFCCC, 2024; GoB, 2021; & UNDP, 2023

02 | GUIDING QUESTIONS FOR “PREVENTION OF DISPLACEMENT”

13/01/2022

2.1 Concept and Background

Operational definition: Prevention of displacement refers to the strategies and efforts aimed at reducing or mitigating the multifaceted risks that force people to leave their homes or communities in the context of disasters and the adverse effects of climate change.

Relevant rights: Right to housing and land, right to access to common resources, right to a healthy life, and right to food security.

Strategic response: Strategic response under ‘prevention of displacement’ will include risk assessments, adaptation and resilience building, and livelihood support. In some circumstances, early warning systems can also be a tool to prevent displacement.

2.2 Themes, Strategies, and Guiding Questions

THEME 2.1 Understanding the Risk and Decision-Making Support

Key Strategy 2.1.1 Developing a Displacement Data System

Guiding Questions:

1. What displacement data collection systems exist in the country?
2. How can existing data collection efforts be integrated into a single, coordinated, standardized system?
3. What are the most appropriate methods for systematic, standardized collection of displacement data (both qualitative and quantitative) at various administrative levels and in hard-to-reach areas?

4. Who are/will be the stakeholders within the country that should be involved in this system? What partnerships or collaborations among local, national, and global stakeholders are required for effective coordination and implementation?
5. How will data reliability, protection, privacy, and the security of sensitive information related to displaced populations be ensured?
6. How will data from the field be validated and consolidated into a single data system?
7. How will the findings from the system be used to inform decision-making and improve response strategies?
8. What capacity-building initiatives will be required for various stakeholders involved in the system?
9. What local and international funding windows can be sought to undertake the process of developing a displacement tracking system?

Key Strategy 2.1.2 Displacement Hotspot Mapping

Guiding Questions:

1. What specific data (e.g., climatic shocks, climate predictions, socio-economic vulnerabilities, structural vulnerabilities) are required to identify areas at varying risks of displacement?
2. Are there any existing data (in the form of maps or numbers) on areas where varying risks of displacement persist in the country?
3. What areas and communities are most vulnerable to disasters and the unavoidable impacts of climate change?
4. How can the existing data sources be leveraged for displacement hotspots mapping?
5. Is the current institutional framework supportive of implementing the tasks for displacement hotspot mapping (e.g., are responsibilities for data collection and analysis clear, are there clear data sharing procedures)? If not, what are the gaps?
6. What representation, visualization, and dissemination techniques are to be followed to effectively communicate data on displacement hotspots with stakeholders at all levels?
7. What will be the mechanism for the 'continuous updating' of the displacement hotspot maps?
8. What are the potential global and national (state and private) funding sources for displacement hotspot mapping?

Key Strategy 2.1.3 Displacement Risk Assessment

Guiding Questions:

1. What methodologies for displacement risk assessment associated with climate change and disasters (e.g., probabilistic forecast, AI approaches like Foresight Model, System Dynamic Model, Agent-Based Modelling, etc.) are relevant/applicable in your country?
2. What are the appropriate indicators (environmental/climatic; demographic: population distribution; socio-economic: cost-burdened household, income, access to jobs, proximity to various facilities, proximity to business center; structural: quality of housing; etc.) available to determine displacement risks in the context of climate change and disasters?
3. Is there any existing census/survey mechanism (e.g. participatory vulnerability analysis, Community-based resilience analysis) that could be used to develop indicators to assess the risks of displacement?
4. What climate change projections are available (or what modelling is needed) to inform forward-looking disaster risk assessments?
5. What factors shape how climate-related loss and damage increase the risk of displacement in a country, and what indicators are available to assess them?

Key Strategy 2.1.4 Displacement through the Lens of Loss and Damage

Guiding Questions:

1. Can displacement data be integrated into broader data collection on disasters, loss and damage?
2. For this to happen, what data should those responsible for national disaster loss databases collect, how often, and for how long?
3. What metrics and indicators are available to determine the economic and non-economic loss and damage due to displacement in the context of disasters and climate change?
4. Is there scope for anticipatory actions (e.g., pre-emptive evacuation, cash transfer, parametric insurance) to be integrated into national plans and policies?
5. Can CVF countries collectively implement strategies like the Southeast Asia Disaster Risk Insurance Facility (SEADRIF)?
6. What legal and policy frameworks are in place to guide, and support planned relocation?

Box 1: Useful Resources related to Understanding the Risk and Decision-Making Support (Theme 2.1)

1. United Nations Office for Disaster Risk Reduction. (2022). Assessing vulnerabilities in disaster displacement: A good practice review. UNDRR. <https://www.undrr.org/publication/assessing-vulnerabilities-disaster-displacement-good-practice-review>
2. Internal Displacement Monitoring Centre. (n.d.). IDMC database. <https://www.internal-displacement.org/database-old/>
3. International Organization for Migration. (2021). DTM methodological framework: 2nd edition. IOM. <https://dtm.iom.int/about/methodological-framework>
4. Bresch, D. N. (2015). CLIMADA: Climate adaptation model—User manual (Version 1.0). European Environment Agency. https://climate-adapt.eea.europa.eu/en/metadata/tools/climada/bresch_2015_climada_manual.pdf/@_@download/file
5. United Nations Office for the Coordination of Humanitarian Affairs. (2023). DRC model card. UN OCHA. <https://data.humdata.org/dataset/2048a947-5714-4220-905b-e662cbcd14c8/resource/be6ab2c8-f3c4-4045-9acf-529f6091c253/download/drc-model-card.pdf>
6. Project Jetson – UNHCR. <https://jetson.unhcr.org/>
7. United Nations Development Programme. (2021). COBRA conceptual framework. UNDP. <https://www.undp.org/publications/cobra-conceptual-framework>
8. World Bank. (2020). Southeast Asia Disaster Risk Insurance Facility (SEADRIF): Strengthening financial resilience in Southeast Asia (Project Information Document No. P170913). World Bank Group. <https://documents1.worldbank.org/curated/en/772221601306153071/pdf/Project-Information-Document-Southeast-Asia-Disaster-Risk-Insurance-Facility-SEADRIF-Strengthening-Financial-Resilience-in-Southeast-Asia-P170913.pdf>
9. European Commission. (2017). INFORM risk index methodology. INFORM. <https://drmkc.jrc.ec.europa.eu/inform-index/INFORM-Risk/Methodology>
10. United Nations Office for Disaster Risk Reduction. (2023). Global assessment report on disaster risk reduction 2023. <https://www.undrr.org/media/100220/download?startDownload=20241020>
11. Department of Social Welfare and Development. (n.d.). About us: Disaster Response Operations Monitoring and Information Center (DROMIC). <https://dromic.dswd.gov.ph/about-us/>

THEME 2.2 Integrating displacement in climate/disaster risk governance

Key Strategy 2.2.1 Integrating displacement in climate/disaster risk governance

Guiding Questions:

1. What are the existing rules, policies, and regulations that define the legal framework associated with climate change and disaster management?
2. How is displacement addressed in the existing legal and policy framework?
3. How is the existing policy and legal framework aligned with international standards and protocols related to internal displacement?
4. How do the existing policy and legal framework protect and promote the rights of vulnerable populations who are at risk of displacement?
5. Does the existing framework explicitly protect and promote the rights of groups that may be particularly vulnerable to displacement, such as women, children, indigenous communities, and persons with disabilities?
6. How do existing sectoral policies and legal frameworks (e.g. on housing, services, infrastructure) address the issues associated with internal displacement, including promoting durable solutions?

Key Strategy 2.2.2 Establishing an institutional Framework, adoption of necessary rules and regulations, and creating an institutional arrangement

Guiding Questions:

1. Which specific ministries, offices, or government agencies at different hierarchical levels are responsible for managing internal displacement due to climate change and disasters?
2. What is the existing mechanism for communication and coordination within and among different agencies?
3. What is the existing mechanism for budget allocation to manage internal displacement?
4. What accountability, learning, and feedback mechanisms exist to ensure the effective implementation of roles and responsibilities of different agencies?

Key Strategy 2.2.3 Mainstreaming displacement into sectoral plans and policies

Guiding Questions:

1. How do the current sectoral policies consider displacement and address the needs of the displaced persons?
2. What specific actions should each sector undertake to effectively integrate a displacement management framework, addressing prevention, protection, and durable solutions?
3. What modifications are required in each sectoral policies and action plans to reduce the risks of displacement among vulnerable populations?
4. What is the current mechanism for inter-sectoral collaboration to ensure a coherent approach for displacement management?

THEME 2.3 Investing in resilience measures by strengthening disaster preparedness and climate change adaptation strategies

Key Strategy 2.3.1 Early Warning System

Guiding Questions:

1. Can the existing early warning system cover all locally relevant hazards? How should they be improved, especially to cover all the hazards that can trigger large-scale displacements?
2. Does the country have early warning mechanisms for slow-onset events?
3. Is the current early warning system tailored to the needs of the specific local communities?
4. Are warnings and advisories accessible and easy to understand for vulnerable communities?
5. Are the specific needs of vulnerable groups such as women, children, indigenous communities, and persons with disabilities accounted for in the existing early warning system?
6. What needs to be done for effective warning systems that can address the risks of displacement?
7. How do hazard monitoring and EWS inform preparedness and early action for displacement? What existing or potential funding mechanisms can be used to develop a multi-hazard, localized, and impact-based early warning system?

Key Strategy 2.3.2 Livelihood Diversification and Protection Strategies

Guiding Questions:

1. What are the existing livelihood profiles of people who are at high risk of displacement?
2. What livelihood diversification strategies, individual and institutional, currently exist? What are the best practices applicable to different areas of the country and to different economic sectors?
3. What is the potential for accessible and affordable insurance schemes for small-holder agriculture in high-risk areas?
4. What are the existing livelihood profiles of people who are at high risk of displacement?
5. What livelihood diversification strategies, individual and institutional, currently exist? What are the best practices applicable to different areas of the country and to different economic sectors?
6. What is the potential for accessible and affordable insurance schemes for small-holder agriculture in high-risk areas?
7. What economic centers are where job placement can be ensured for people living in areas where a high risk of displacement persists?
8. What institutional, policy, and legal arrangements are there or need to be made to implement various livelihood diversification strategies?
9. Are there any social protection schemes for vulnerable populations?
10. Are there skill development centers or vocational training institutions in or near the high-risk areas?
11. How can the existing strategies like social protection and vocational training programs be improved to equip vulnerable populations to access new livelihood opportunities?
12. What partnership mechanism with local, national, and international stakeholders can be arranged?
13. Is livelihood diversification an important element in the existing climate change and disaster risk reduction strategies?
14. Are there provisions for microfinance or SME loans for vulnerable populations? If not, what is the scope to establish them?
15. Is there evidence of how remittances contribute to the well-being and resilience of vulnerable people who are at risk of displacement?

16. What mechanisms are available to identify potential migrants from vulnerable communities and support them in advance of climate-related events to prevent displacement?
17. What skill development activities exist/can be offered to facilitate skilled migration from vulnerable communities especially for women and youths?
18. What role can local governments and communities play in facilitating migration as a preventive adaptation strategy?
19. What sorts of incentives are currently in place/can be offered to establish remittance as an effective method for adaptation?
20. What types of training and educational activities are conducted or required to enhance employment opportunities for IDPs?
21. What partnerships can be established with various organizations to provide vocational training that supports both local and international employment opportunities?
22. How can the relevant ministry, along with the private sector, be encouraged to support short-term international contract labour migration for internally displaced families?
23. What are the best practices from other countries that can be utilized to adopt/strengthen the strategies for anticipatory adaptation in the country?

Key Strategy 2.3.3 Infrastructure Development

Guiding Questions

1. What are the infrastructural needs to prevent displacement in a specific area?
2. Are their measures to monitor and maintain the disaster-related infrastructures based on real-time data and participation of vulnerable communities?
3. What criteria should be identified for the management of natural resources and disaster infrastructures across the country?
4. How can technology-based monitoring systems be implemented to prevent damage and quickly allocate resources for infrastructures?
5. How can safe housing arrangements be integrated into township planning for internally displaced persons (IDPs) who migrate to cities or towns for work?
6. What criteria is used or should be used to determine the type and nature of adequate housing and shelter needed for people at risk of displacement or displaced persons based on the specific disaster?

THEME 2.4 Creation of Employment

Key Strategy 2.4.1 PPP for employment generation in areas where displacement occurred

Guiding Questions:

1. Same as Key Strategy 2.3.2 Livelihood Diversification and Protection Strategies

Additional Guiding Questions:

1. What criteria should be used to select the most suitable locations for urban centers to reduce pressure on major cities?
2. How can formal employment and income-generating opportunities be developed in these growth centers to support displaced people?
3. What infrastructure and services (e.g., low-cost housing, education, healthcare, water, sanitation, electricity) are necessary to support the development of these peri-urban areas?
4. What strategies can be implemented to discourage migration towards major cities and promote the development of secondary cities?

Guiding Questions

1. What data and tools are necessary to assess and integrate displacement risks into land use planning?
2. How can human settlement and immigration be planned for and managed in areas identified as highly exposed to hazards?
3. What strategies can be employed to reduce or mitigate risks in exposed zones where people concentrate?
4. What legal and regulatory measures are necessary to enforce restrictions on settlement or building standards in highly vulnerable zones?
5. How can community awareness and engagement be increased in relation to the risks of settling in unprotected or vulnerable areas?
6. What legal and policy framework is currently in place or required for the collective use of Common Pool Resources (CPRs)?
7. How can access land and water resources be ensured for poor, marginal, and displaced persons through this institutional structure?

Box 2: Useful Resources on Strengthening Climate Governance, Disaster Risk Reduction and Climate Change Adaptation (Theme 2.2 and 2.3)

1. African Union. (2009). African Union Convention for the Protection and Assistance of Internally Displaced Persons in Africa (Kampala Convention). African Union. https://au.int/sites/default/files/treaties/36846-treaty-kampala_convention.pdf
 2. Brookings Institution, The Guiding Principles on Internal Displacement: Judicial Incorporation and Subsequent Application in Colombia, 2009. https://www.brookings.edu/wp-content/uploads/2016/07/Chapter_6.pdf
 3. UNHCR & Global Protection Cluster. (2010). Regional framework on protection of internally displaced persons. United Nations High Commissioner for Refugees. <https://api.internal-displacement.org/sites/default/files/publications/documents/UNHCR-GPC-Reg-Framework-IDP.pdf>
 4. World Meteorological Organization. (2024). Early warnings for all: Factsheet. World Meteorological Organization. https://wmo.int/sites/default/files/2024-06/Early-Warnings-for-All_Factsheet_EN.pdf
 5. United Nations Office for Disaster Risk Reduction. (2024). Global status of multi-hazard early warning systems 2023. United Nations Office for Disaster Risk Reduction. <https://www.undrr.org/media/91954/download?startDownload=20240819>
 6. World Meteorological Organization. (2023). Early warnings for all: Executive action plan 2023–2027. World Meteorological Organization. https://library.wmo.int/viewer/58209/download?file=Executive_Action_Plan_en.pdf&type=pdf&navigator=1
 7. National Integrated Drought Information System. (2021). 2021–2024 Midwest drought early warning system strategic action plan. National Oceanic and Atmospheric Administration. https://www.drought.gov/sites/default/files/2021-11/2021%E2%80%932024_MW_StrategicPlan.pdf
 8. United Nations Office for Disaster Risk Reduction (UNDRR). (2020). Words into action: Multi-hazard early warning systems: A checklist. UNDRR. <https://www.undrr.org/words-into-action/guide-multi-hazard-early-warning>
-
-

03 | GUIDING QUESTIONS FOR “PROTECTION DURING DISPLACEMENT”

3.1 Concept and Background

Definition: Protection during displacement refers to measures and mechanisms aimed at safeguarding the rights, safety, and well-being of individuals and communities who have been forced to leave their homes due to disasters or the impacts of climate change.

Relevant rights: To be protected from discrimination, violence, and threats to physical integrity, including sexual and gender-based violence, forced labour, or the recruitment of children.

Strategic Response: When displacement occurs, it is important to intervene quickly and decisively to manage it and address urgent humanitarian needs as well as to ensure effective protection. Effective preparedness that integrates displacement concerns is key to managing displacement and its consequences to the extent possible. Protection of the assets of those displaced is also important, including livestock for displaced pastoralists and herders.

3.2 Themes, Strategies, and Guiding Questions

THEME 3.1 Preparedness Measures

Key Strategy 3.1.1 Preparedness before a response to ensure the safety and well-being of displaced populations

Guiding Questions

1. Is the EWS linked to evacuation plans?
2. Is there any local response mechanism for timely and culturally appropriate emergency response?
3. Are there initiatives geared towards the preparedness of the communities who are at risk of displacement?
4. What is the existing mechanism to preposition essential supplies in the areas prone to displacement?
5. Are the local actors adequately trained and prepared with resources to deal with potential displacement situations? What can be improved?
6. What communication system exists to offer protection during displacement in terms of rescue, relief, and access essential services? What alternatives are there?

THEME 3.2 Evacuation Planning and Action

Key Strategy 3.2.1 Developing Evacuation Plans

Guiding Questions

1. Are evacuation sites, both managed by governmental (e.g. dedicated or multi- function buildings, schools) and non-governmental actors (e.g. churches, mosques, temples, community centers) identified and mapped? Are they assessed against key criteria (accessibility, safety, physical security, access to basic services)?
2. Do national and local governments invest in strengthening the availability of safe, hazard-resistant evacuation sites so that all people at risk can find protection in appropriate locations in the event of a disaster?
3. Are other locations that could host displaced people in a disaster identified and mapped (e.g. empty urban spaces, parks, plots of land, hotels and private accommodations, workplaces)?
4. Are there provisions in place to allocate and protect relevant buildings and land for use during evacuations (and to compensate owners if needed)?
5. Are there plans in place for the transitional phase, to ensure that buildings and land can be returned to their initial function as soon as possible?
6. Are the key routes and transportation means people will use during evacuations to get designated evacuation sites identified?
7. Are standards identified to develop evacuation signs and maps and to ensure that people know where to go during evacuations?
8. Do evacuation plans appropriately cover all locations at risk, including informal settlements?
9. Are individuals who will need specific assistance during evacuations identified?
10. Are there procedures in place to support collaboration across administrative areas in case of evacuations outside a disaster-affected location?

Key Strategy 3.2.2 Resourcing preparedness for displacement

Guiding Questions

1. Are essential materials and items prepositioned in locations where they can be effectively used to assist displaced people?
2. Are stockpiled items appropriate to meet the needs of different people, including individuals from groups with specific needs (e.g. women, elderly, children)?
3. Are providers and pipelines identified to ensure access to items and materials that cannot be stockpiled?
4. Are personnel that will support evacuations in different roles (e.g. assistance to movement, management of evacuation sites) in different locations identified? Does this include

representatives of community organizations and businesses, community leaders, religious leaders in addition to disaster management personnel?

5. Are relevant personnel regularly trained to manage the evacuation of the population in disasters, including individuals with specific needs?
6. Are there clear procedures in place for the deployment of evacuation assistance personnel and vehicles, including for search and rescue, when Early Warnings are disseminated?
7. Are awareness-raising campaigns on hazards, risks, and responses carried out in communities at risk?
8. Are evacuation drills regularly carried out in communities at risk, so people know how to react if they must flee their homes?
9. Are there communication and coordination systems in place to ensure the management and the exchange of information across locations in disasters?

THEME 3.3 Emergency Response

Key Strategy 3.3.1 Strengthening Humanitarian and Disaster Relief Assistance

Guiding Questions

1. Are the needs of displaced populations effectively assessed, in alignment with the SPHERE Standards? How can relevant assessments be improved?
2. What processes are in place to organize a response that covers water supply, sanitation, hygiene promotion, food security, nutrition, shelter, and health action for displaced people? How can they be improved?
3. Are the UN Guiding Principles on Internal Displacement operationalized or do they need to be operationalized in displacement management efforts?
4. Are the IASC Operational Guidelines and other international standards integrated into the response for displaced populations? How can their integration be improved?
5. What measures can be implemented to prevent discrimination in accessing services like relief for displaced persons?

Key Strategy 3.3.2 Smart and effective management of documentation system for IDPs

Guiding Questions

1. What processes are there or should be established to promptly re-issue personal legal documents (such as national identity cards, birth certificates, passports, and marriage licenses) to displaced people?
2. What measures are there or can be implemented to ensure that displaced persons are not deprived of basic rights due to the loss or destruction of documents during a disaster?
3. What resources and infrastructure are necessary to support the re-issuance process in post-disaster scenarios?
4. How can local authorities be supported in the restoration and verification of documentation for displaced persons?

Key Strategy 3.3.3 One-stop financial service for IDPs

Guiding Questions

1. Are the needs and challenges of IDPs assessed to inform the development of a one-stop financial service system?
2. What are the most critical financial needs of the IDPs?
3. Can financial services such as cash transfers, microloans, or remittance channels be integrated into one-stop service centers for IDPs?
4. What mechanisms exist to protect displaced people from exploitation, fraud, or theft when accessing financial assistance?

THEME 3.4 Protecting Fundamental Rights

Key Strategy 3.4.1 Access to shelter, one-stop crisis center, and psycho-social centers especially for women

Key Strategy 3.4.2 Adequate and safe housing for shelter and housing for IDPs

Guiding Questions

1. What measures are there or need to be implemented to ensure the security and safety of displaced people during emergencies?
2. What criteria are used or should be used to determine the type and nature of adequate shelter needed for displaced people based on the specific disaster?
3. Are there any measures (e.g., toll-free 24-hour emergency hotline, police patrolling in areas of origin and displacement sites) currently planned or employed? What needs to be done further?
4. How can communication between displaced people and emergency services be facilitated through these special measures?
5. Are there training arrangements for government and local authorities to be aware of the respect and uphold the rights of displaced people during emergencies? If not, how can those be put in place?
6. How are the temporary shelters currently provided? Are the provisions mentioned in the evacuation planning? Are they accessible? How can their number and design be improved, or can alternatives be arranged to ensure the immediate needs of displaced people?
7. What measures exist or should be implemented to ensure that displaced children and youths have uninterrupted access to education?
8. How can temporary education facilities be established in displacement areas to meet the immediate educational needs of displaced people?
9. What partnerships and resources are available and what more are necessary to support the right to education of displaced children and youths?

04 | GUIDING QUESTIONS FOR “DURABLE SOLUTIONS”

4.1 Concept and Background

Definition: Comprehensive and sustainable strategies designed to address the long-term needs of displaced populations and facilitate their ability to rebuild their lives with stability, security, and dignity. Relevant rights: Non-discrimination and equality; Housing Land Property (HLP) Rights: right to security of tenure; right not to be arbitrarily evicted; right to land and rights in land; right to property and the peaceful enjoyment of possessions; right to privacy and respect for the home; right to HLP restitution/compensation following forced displacement; the right to freedom of movement and to choose one’s residence; the right to political participation; the right to information; right to water; and the right to energy; Procedural Rights: right to freedom of expression and access to information; participatory rights, including the right to vote.

Strategic Response: Displacement needs to be addressed to avoid protracted situations through durable solutions. Looking for durable solutions in the context of displacement in the context of climate change means ensuring sustainable options in areas where people can live safe lives. This applies to return, local integration, or resettlement alike. In line with the IASC Framework on Durable Solutions, a durable solution is achieved only when displaced people no longer require any specific assistance, and protection needs stemming from their displacement.

4.2 Themes, Strategies, and Guiding Questions

THEME 4.1 Return

Key Strategy 4.1.1 Assess the safety, security, and stability in the area of origin for possible return

Key Strategy 4.1.2 Provide relevant and accurate information to IDPs on the situation in their home areas and facilitate go-and-see visits to inform their voluntary decision to return

Guiding Questions

1. Is there any mechanism currently in place to facilitate the process of return?
2. What criteria are followed, or should they be used to assess safety, security, and stability in areas of origin for displaced people?
3. How is it determined if return is a viable option for displaced people? What needs to be done?
4. How are the IDPs informed about the situation in their places of origin? How can this mechanism be strengthened?
5. How are or can the risks associated with returning be mitigated for displaced persons?
6. What roles can local and international stakeholders play in monitoring and reporting on the safety and stability of areas of origin?

Key Strategy 4.1.3 Ensure protection measures for saving ecosystems and ecosystem services and restore the housing, land, and property (HLP) of returnees.

Key Strategy 4.1.4 Assistance for the reconstruction of the infrastructures

Key Strategy 4.1.5 Provision for low-cost climate-resilient and local ecology- appropriate housing

Guiding Questions

1. What specific protection measures are available or necessary to safeguard ecosystems and ecosystem services in areas where displaced people are returning?
2. How can the restoration of housing, land, and property (HLP) for returnees be prioritized and effectively implemented?
3. How are or can local communities and authorities be engaged in the process of HLP restoration for returnees?
4. What monitoring mechanisms can be established to ensure the long-term sustainability of HLP for returnees?
5. How can public, private, NGO, and international actors support the construction of low-cost, disaster, and climate-resilient housing for displaced people who have returned to their places of origin?
6. How can landless returnees be assisted in acquiring land according to the provisions of the current country's land policy?

Key Strategy 4.1.6 Access to easy loans and credit

Key Strategy 4.1.7 Re-establish livelihoods or introduce alternative livelihood options in areas of return

Key Strategy 4.1.8 Facilitate labour migration of a few members of the family to diversify the livelihood of the returnee

Guiding Questions

1. How can loan facilities be structured to support the reconstruction of housing units and the development of farm and off-farm livelihoods for displaced people?
2. What specific measures can be implemented to ensure that vulnerable groups, including women, persons with disabilities, ethnic and religious minorities, and the extremely poor,

- have access to these loan facilities?
- 3. How can loan programs be tailored to address the unique needs of those who do not have access to income or social benefits?
- 4. Review questions from Key Strategy 2.3.2

THEME 4.2 Local Integration

Key Strategy 4.2.1 In-situ upgradation and improvement of low-income settlements, ensure tenure security of urban poor

Guiding Questions

1. How are/can displaced persons living in informal settlements in urban areas be identified and included in benefit programs?
2. What specific provisions are or should be made available to ensure that displaced people in informal settlements have access to essential services and support? What roles can local government and organizations play to this end?
2. What strategies (e.g., in-situ upgrading and improvement) can be implemented to improve the living conditions of displaced persons in informal urban settlements?
3. How can the resettlement of slum dwellers be conducted in a way that preserves their livelihoods and community ties?
4. What measures are necessary to ensure tenure security for the urban poor in slum areas?
5. What mechanisms exist to monitor and assess the impact of these provisions on the well-being of displaced people in informal settlements?
6. How can the needs of displaced people be assessed and met in rehabilitation and resettlement plans?
7. What measures can be taken to ensure the proper rehabilitation of slum dwellers and floating populations when eviction takes place?
8. How can the Government-NGO-Youth organization partnerships be leveraged for these improvements, upgradations, and rehabilitation?

Key Strategy 4.2.2 Support local integration through livelihood projects and improvement of services

Key Strategy 4.2.3 Make members of host communities a part of local integration interventions

Guiding Questions

1. How can livelihood projects be designed to support the local integration of displaced people, particularly marginalized groups?
2. What strategies can be implemented to improve services that facilitate the integration of displaced people into local communities?
3. How can access to the local job market be ensured for IDPs, including women, persons with disabilities, and ethnic and religious minorities?
4. How can members of host communities be effectively included in local integration interventions for displaced people?
5. What strategies can be developed to ensure that the expected benefits of integration projects also reach the poorer sections of host communities?
6. What other best practices on local integration from other countries can help?

Key Strategy 4. 2.4 Make necessary arrangements for the reconciliation of any disputes that may arise between IDPs and local people

Key Strategy 4.2.5 Support measures that promote the participation of IDPs in the public life of the new community

Key Strategy 4.2.6 Ensure any relevant documentation is restored, thus facilitating unimpeded access to core services on a non-discriminatory basis

Guiding Questions

1. What mechanisms are established through local administrations, government institutions, NGOs, religious institutions, and youth agencies to reconcile disputes between displaced people and local communities? How can they be improved?
2. How can local leaders and mediators be involved in the dispute resolution process to ensure fair outcomes?
3. What resources and training are provided or necessary for local government institutions to effectively manage and resolve conflicts between displaced people and locals?
4. How can transparency and fairness be ensured in the dispute resolution process to maintain trust among all parties involved?
5. What follow-up measures can be implemented to prevent the recurrence of disputes between displaced people and local communities?

Key Strategy 4.2.7 Make provision to facilitate family reunification

Guiding Questions

1. What specific measures can be taken to facilitate family reunification for displaced people, especially those with dependent members?
2. How can the needs of dependent members, including children, people with disabilities, and older people, be prioritized in the family reunification process?
3. What legal and logistical challenges might arise in reuniting displaced families, and how can they be addressed?
4. How can coordination between local and national authorities and relevant international actors (e.g. Red Crescent/Red Cross Societies) be strengthened to support family reunification efforts?
5. What support services are necessary to assist families during and after the reunification process?

THEME 4.3 Resettlement/Planned Relocation

Key Strategy 4.3.1 Ensure meaningful participation of and partnership with affected communities in all resettlement/Planned Relocation actions

Guiding Questions

1. How can the meaningful and inclusive participation of affected communities in resettlement/Planned Relocation actions be ensured?
2. What mechanisms can be implemented to prevent discrimination on the grounds of religion, race, caste, sex, place of birth, or disability in Planned Relocation processes?
3. What strategies can be employed to rebuild social networks and promote livelihoods in resettled communities?
4. How can compensation for lost assets be provided fairly, and how can housing and land tenure be maintained for resettled residents?
5. What public or public-private measures, programmes, or incentives exist to promptly provide adequate housing and shelter for displaced people? How can they be improved?

Key Strategy 4.3.2 Identify suitable places/land for future resettlements/Planned Relocations in consultation with different relevant ministries

Key Strategy 4.3.3 Review public land holdings and select possible long-term resettlement sites

Guiding Questions

1. What criteria should be used to identify suitable sites or land for future resettlements?
2. How are or can the needs and preferences of displaced communities be integrated into the selection of future resettlement sites?
3. How are or can different ministries be effectively consulted and coordinated in the process of selecting resettlement sites?
4. What factors related to climate resilience, environmental health, livelihood opportunities, and infrastructure are or need to be considered when identifying land for resettlement?
5. What criteria can be used to set aside and protect land for potential resettlement?
6. Are land reclamation programs an option? Can they support resettlement programmes?
7. What steps are necessary to establish new economic zones in these resettlement areas to support the displaced population?
8. What processes should be established to ensure the long-term sustainability and suitability of identified resettlement areas?
9. What legal mechanism exists to ensure the safety and security of displaced people? What else can be ensured in both temporary and permanent housing arrangements?
10. How can local authorities and financial institutions collaborate to support displaced people in acquiring land?

Key Strategy 4.3.4 Integrate the provision for inclusion of IDPs in government resettlement project sites

Key Strategy 4.3.5 Ensure participation of the private sector in developing and maintaining the rehabilitation sites

Key Strategy 4.3.6 Ensure the participatory process of selecting a resettlement site

Guiding Questions

1. How can land and shelter be provided to families who become landless due to slow-onset processes or the establishment of no-built zones in high-risk areas?
2. What processes should be followed to rehabilitate displaced families in the nearest government resettlement areas in line with the national policies?
3. What criteria should be used to prioritize displaced families for shelter and rehabilitation efforts?
4. What processes are there, or should they be established to ensure that displaced people can transition from temporary shelters to permanent and safe habitats?
5. Do the large manufacturing sectors recruit displaced people as workers? How can relevant recruitment schemes be incentivized?
6. Are there relevant initiatives under corporate social responsibility schemes? How can they be aligned with employment creation for displaced people?
7. How can local authorities facilitate special referrals of displaced people to ensure they have access to job opportunities in the private sector?
8. How can displaced people be effectively involved in programs offering subsidized loans for small businesses? What should be the criteria to access them?

Key Strategy 4.3.7 Make sure resettlement/Planned Relocation measures are consistent with international norms

Guiding Questions

1. How can Planned Relocation measures be aligned with international norms to ensure the protection of displaced people?
2. What strategies can be implemented to avoid forced relocations and instead provide alternative housing and land in consultation with displaced people?
3. How can displaced people be actively involved in the decision-making process regarding their relocation or resettlement?
4. What measures can be taken to ensure that relocation or resettlement is managed as a positive adaptation strategy for affected people?

HOW TO USE THIS TEMPLATE

The following template will help relevant stakeholders develop guidelines to manage internal displacement in each CVF country. A case of Bangladesh is included in the template below as an example.

Theme	Major Activities	Guiding Questions	What is available?	What needs to be done?	Challenges	Stakeholder identification
Investing in DRR and CCA	Strengthen early-warning system for rapid onset events such as floods, erosion and cyclones and slow onset climate-related hazards such as drought. The system should be supported by effective action based on commitment, political will and response mechanism.	See Point 2.1	There is an early warning system for rapid-onset events. However, those are not impact-based and localized. Hence, such a system does not allow scopes for anticipatory actions. There are no early warning systems for slow-onset events like drought.	The existing early warning system is more technical and often goes beyond the capacity of the vulnerable communities to decode. Hence, there is a need to simplify the early warning message by making those more context specific.	Requires fund. Requires technical capacities. Requires a robust database	Ministry of Disaster Management and Relief, Bangladesh Meteorological Department, Ministry of Environment, Forest and Climate Change

REFERENCES

- Aliozi, Z. (2021). Climate Justice and Human Rights, in a World in Climate Emergency. Global Campus of Human Rights. <https://doi.org/10.25330/1232>
- Biswas, B., & Mallick, B. (2021). Livelihood diversification as key to long-term non- migration: Evidence from coastal Bangladesh. *Environment, Development and Sustainability*, 23, 8924–8948. <https://doi.org/10.1007/s10668-020-01005-4>
- Center for Integrative and Development Studies. (2025). Fostering collaboration for community-based disaster risk reduction and management: A case study of Barangay Tatalon, Quezon City [Discussion paper]. University of the Philippines. <https://cids.up.edu.ph/download/fostering-collaboration-community-based-disaster-risk-reduction-management/>
- Center for Excellence in Disaster Management & Humanitarian Assistance. (2024, February). Humanitarian corridors and safe passage at sea (Protection of Civilians in the Maritime Domain Research Series). https://www.cfe-dmha.org/LinkClick.aspx?fileticket=pn_ac7NeTYs%3d
- Center for Climate and Energy Solutions. (2023, June). Loss and damage funding arrangements: Gap analysis. <https://www.c2es.org/wp-content/uploads/2023/06/LD- Funding-Arrangements-Gap-Analysis.pdf>
- Climate Vulnerable Forum. (2022, June). GLOBE-CVF Climate Laws Report. Retrieved from <https://www.thecvf.org/wp-content/uploads/2022/06/GLOBE-CVF-Climate-Laws-Report- June-2022.pdf>
- Climate Vulnerable Forum. (2024). Current list of members. <https://cvfv20.org/membership/>
- Gupta, S., King, A. D., & Krishnan, H. (2024). Climate-induced migration in South Asia: Evidence from high-resolution datasets. *Nature Communications*, 15, Article 48065. <https://doi.g/10.1038/s41467-024-48065-y>
- Government of Bangladesh. (2022). ‘National Action Plan (2022-2042) to Implement the National Strategy on Internal Displacement’. MoDMR, GoB. [https://modmr.portal.gov.bd/sites/default/files/files/modmr.portal.gov.bd/publications/9fa_f92a8_f054_4a04_290_91ee14bb88b0/Eng_National%20Action%20Plan%20\(2022- 2042\)%20on%20Internal%20Displacment%20\(4\).pdf](https://modmr.portal.gov.bd/sites/default/files/files/modmr.portal.gov.bd/publications/9fa_f92a8_f054_4a04_290_91ee14bb88b0/Eng_National%20Action%20Plan%20(2022- 2042)%20on%20Internal%20Displacment%20(4).pdf)
- Government of Bangladesh. (2021). National Strategy on Internal Displacement Management. MoDMR, GoB. [https://modmr.portal.gov.bd/sites/default/files/files/modmr.portal.gov.bd/publications/d0_5820e8_b72f_43a1_8cfe_4b4bd34a2560/NSIDM%20Publication\(Size%206.5%20X%209.5%20in\).pdf](https://modmr.portal.gov.bd/sites/default/files/files/modmr.portal.gov.bd/publications/d0_5820e8_b72f_43a1_8cfe_4b4bd34a2560/NSIDM%20Publication(Size%206.5%20X%209.5%20in).pdf)
- Hermans, K., Kloos, J., & Oberlack, C. (2023). Climate change and livelihood diversification: Evidence from sub-Saharan Africa. *Global Environmental Change*, 78, 102647. <https://doi.org/10.1016/j.gloenvcha.2023.102647>
- Hufnagel, J., Reckling, M., & Ewert, F. (2020). Diverse approaches to crop diversification in agricultural research: A review. *Agronomy for Sustainable Development*, 40(14). <https://doi.org/10.1007/s13593-020-00617-4>

Internal Displacement Monitoring Centre. (2025). 2025 Global Report on Internal Displacement (GRID). https://api.internal-displacement.org/sites/default/files/publications/documents/idmc-grid-2025-global-report-on-internal-displacement.pdf?_

Internal Displacement Monitoring Centre. (2024). 2024 Global Report on Internal Displacement (GRID). <https://www.internal-displacement.org/global-report/grid2024/>

Internal Displacement Monitoring Centre. (2017). Global disaster displacement risk: A baseline for future work. IDMC. <https://api.internal-displacement.org/sites/default/files/publications/documents/201710-IDMC-Global-disaster-displacement-risk.pdf>

International Organization for Migration. (2022). DTM methodological framework: 2nd edition. IOM.

Intergovernmental Panel on Climate Change. (2022): Climate Change 2022: Impacts, Adaptation and Vulnerability. Contribution of Working Group II to the Sixth Assessment Report of the Intergovernmental Panel on Climate Change [H.-O. Pörtner, D.C. Roberts, M. Tignor, E.S. Poloczanska, K. Mintenbeck, A. Alegría, M. Craig, S. Langsdorf, S. Löschke, V. Möller, A. Okem, B. Rama (eds.)]. Cambridge University Press. Cambridge University Press, Cambridge, UK and New York, NY, USA, 3056 pp., <https://doi.org/10.1017/9781009325844>

Moore, L. (2023, November). How Should States Manage Climate Mobilities and Planned Relocations? Early Lessons from Fiji and Vanuatu. Toda Peace Institute

National Disaster Operations Centre. (2025, June 18). Kenya launches National Disaster Risk Management Strategy 2025–2030 to strengthen disaster risk management. <https://www.ndoc.go.ke/kenya-launches-national-disaster-risk-management-strategy-2025-2030-strengthen-disaster-risk>

Steele, J., Boyd, E., & Mulugetta, Y. (2024). Institutional arrangements and livelihood diversification in climate-vulnerable regions. *Climate Policy*, 24(2), 123-140. <https://doi.org/10.1080/14693062.2024.1947986>

Siddiqui, T. (2022). 'Climate change and displacement: locating the most vulnerable groups'. In Habibul Khondoker, Olav Muurlink & Asif Bin Ali (Eds). *The Emergence of Bangladesh* (pp. 259-272). Palgrave Macmillan, Singapore. https://doi.org/10.1007/978-981-16-5521-0_15

Siddiqui, T., Szaboova, L., Adger, W.N., Safra de Campos, R., Bhuiyan, M.R.A. and Billah, T. (2021). 'Policy Opportunities and Constraints for Addressing Urban Precarity of Migrant Populations'. *Glob Policy*. <https://doi.org/10.1111/1758-5899.12855>

Siddiqui, T. et al. (2018). 'Accommodating Migration in Climate Change Adaptation: A GBM Delta Bangladesh Perspective'. RMMRU, Dhaka 2018 pp 185. <http://www.rmmru.org/newsite/wp-content/uploads/2019/10/Accommodating-Migration-in-Climate-Change-Adaptation.pdf>

United Nations. (2022). Action agenda on internal displacement. United Nations. https://www.un.org/en/content/action-agenda-on-internal-displacement/assets/pdf/Action-Agenda-on-Internal-Displacement_EN.pdf

United Nations Development Programme. (2023). Mapping climate mobility hotspot risks: An approach for development organizations to assess risks and responses to climate mobility. UNDP. <https://www.undp.org/latin-america/publications/mapping-climate-mobility-hotspot-risks-approach-development-organizations-assess-risks-and-responses-climate-mobility>

UNFCCC (2024). Technical guide on integrating human mobility and climate change linkages into relevant national climate change planning processes. https://unfccc.int/sites/default/files/resource/WIM_ExCom_human-mobility_TFD_2024.pdf

UN Women (2020). Fiji: Displacement Guidelines in the Context of Climate Change and Disasters 2020. UN Women WRD Knowledge Hub. <https://wrd.unwomen.org/practice/resources/fiji-displacement-guidelines-context-climate-change-and-disasters-2020#8203>

World Resources Institute. (n.d.). Loss and damage from climate change. Retrieved from <https://www.wri.org/insights/loss-damage-climate-change#:~:text=%E2%80%9CLoss%20and%20damage%E2%80%9D%20is%20a,and%20lives%20during%20extreme%20floods>.

About the Template

A Template for Climate Vulnerable Forum (CVF) Countries to Manage Internal Displacement is a document designed to guide Climate Vulnerable Forum (CVF) countries in addressing climate-induced displacement. This guide is developed by the Ministry of Disaster Management & Relief (MoDMR) of the Government of Bangladesh (GoB). It provides a structured approach to preventing displacement, protecting displaced populations, and facilitating durable solutions.

By integrating guiding questions, strategic frameworks, and global best practices, the template helps policymakers assess risks, design interventions, and align national strategies with international commitments. This resource serves as a critical tool for governments, development agencies, and humanitarian actors working to strengthen climate resilience and safeguard the rights and well-being of at-risk and already displaced communities.



National Strategy on Internal Displacement Management



National Action Plan (2022-2042)



www.modmr.gov.bd



PLATFORM
ON DISASTER
DISPLACEMENT
FOLLOW-UP TO THE NANSSEN INITIATIVE

NANSSEN INITIATIVE PROTECTION AGENDA
Towards better protection for
people displaced in the context
of disasters and climate change

